



YOSHIMURA

RESEARCH&DEVELOPMENT OF AMERICA, INC.

5420 DANIELS STREET STE A, CHINO CA., 91710 · (800)634-9166 · (909)628-4722 · FACSIMILE (909)591-2198

www.yoshimura-rd.com

YOSHIMURA PERFORMANCE EXHAUST SYSTEM

**2006-2007
SUZUKI
GSX-R600**

1104072	TRC FULL SYSTEM WITH CARBON FIBER SLEEVE
1104075	TRC FULL SYSTEM WITH STAINLESS SLEEVE
1104077	TRC FULL SYSTEM WITH TITANIUM SLEEVE



THIS PRODUCT IS DESIGNED FOR USE IN CLOSED COURSE RACING AND IS NOT INTENDED FOR HIGHWAY USE.



NOTE: IN THE STATE OF CALIFORNIA, IT IS ILLEGAL TO MODIFY THE EMISSION CONTROL SYSTEM. WHICH INCLUDES THE CARBURETORS OF ANY VEHICLE.

Caution: Exhaust system can be extremely hot. Let motorcycle cool down before beginning installation.

Note: Read through all instructions before beginning installation.

Tools Needed:

11 and 12mm socket
3/8" ratchet and extension
12mm wrench
4mm and 6mm allen wrench
Torque wrench
Small flat head screwdriver

Installation Steps:

- 1 Remove left and right side fairings (see Fig. 1 and Fig. 2).
- 2 Remove stock muffler and stock muffler gasket (see Fig. 3 and Fig. 4).
- 3 Remove lower radiator support bracket and swing radiator forward to ease removal of stock header.
- 4 Remove stock header and exhaust port gaskets.

NOTE: This Yoshimura full system is designed to be installed without exhaust port gaskets. If exhaust port gaskets are used, there may be insufficient clearance between the header and radiator.

NOTE: Insert supplied 12mm bolt and crush washer into O2 sensor bung on Yoshimura header.

- 5 Install Yoshimura manifolds and flanges into exhaust ports using stock header nuts (see Fig. 5 for flange orientation).
- 6 Torque header nuts to 1.0 kgf-m (7.3 lb-ft).
- 7 Install Yoshimura header from one end of the engine to the other by slipping one tube at a time onto manifolds.

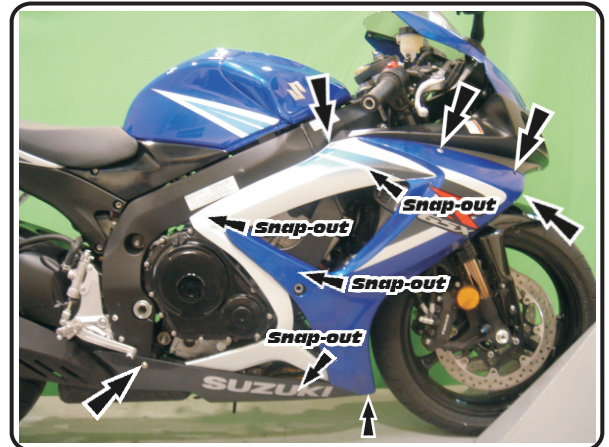


Fig. 1



Fig. 2

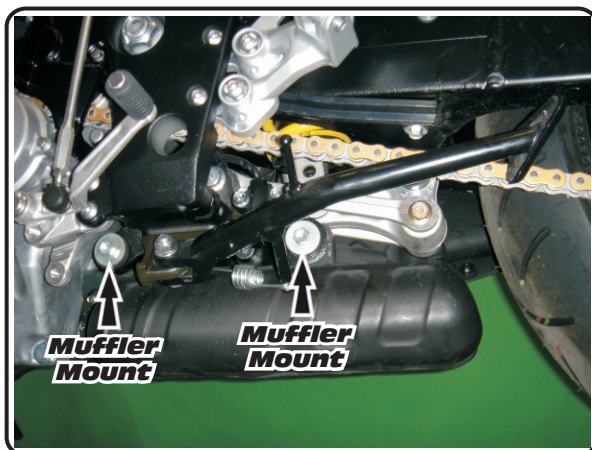


Fig. 3

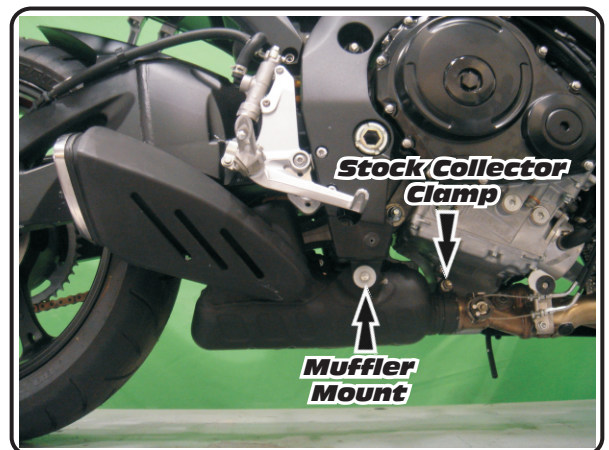


Fig. 4

- 8 Connect header to flanges using the supplied springs (see Fig. 5 for spring locations).
- 9 Slide Yoshimura oval muffler onto Yoshimura header outlet and connect together using the supplied small exhaust springs (see Parts Diagram on page 6).
- 10 Bolt oval muffler to stock muffler mount location using stock muffler mount bolts and supplied nuts.
- 11 Slide Yoshimura tailpipe #1 into oval muffler. Connect Yoshimura tailpipe #1 to oval muffler using the supplied exhaust springs, bolt, washer, rubber grommet, aluminum spacer, and nut (see Fig. 6 and Parts Diagram on page 6).
- 12 Slide Yoshimura tailpipe #2 and Yoshimura TRC muffler over Yoshimura tailpipe #1. Connect tailpipe #1 to tailpipe #2 using the supplied exhaust springs.
- 13 Remove right passenger footpeg bolts. Install the Yoshimura aluminum muffler bracket under the stock footpeg using the two supplied 8mm x 45mm long bolts and two supplied aluminum spacers (see Parts Diagram on page 6).
- 14 Mount TRC muffler to muffler bracket using the supplied bolt, washer, and nut (see Fig. 7 and Parts Diagram on page 6).
- 15 Torque all muffler mount bolts to 2.3 kgf-m (16.5 lb-ft).
- 16 Torque supplied collector clamp to 1.1 kgf-m (8 lb-ft).
- 17 Reinstall lower radiator bracket and the left and right side fairings.
- 18 It is recommended that the muffler and tailpipe be wiped down with rubbing alcohol to remove oil and fingerprints. This will help prevent tarnishing of the finish after the exhaust is heated up.
- 19 Check for proper clearance between new exhaust system and motorcycle. (i.e. Swing-arm, body work, etc.) If any problem is found, please carefully follow through the installation steps again. If problem still persists, please call Yoshimura technical department at (800)634-9166 / in CA (909)628-4722.

Note: After starting motorcycle, it is normal for new exhaust system and muffler to smoke until oil residue burns off.

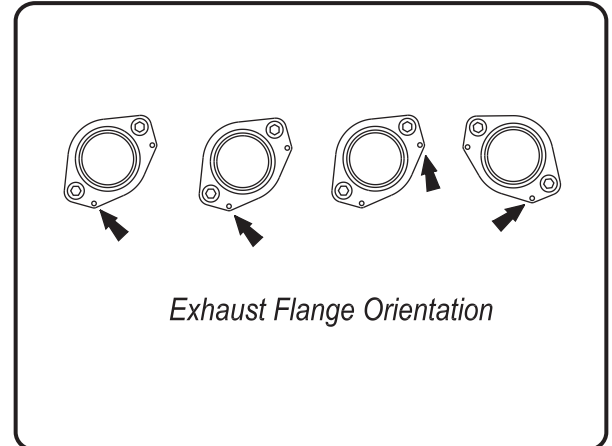


Fig. 5

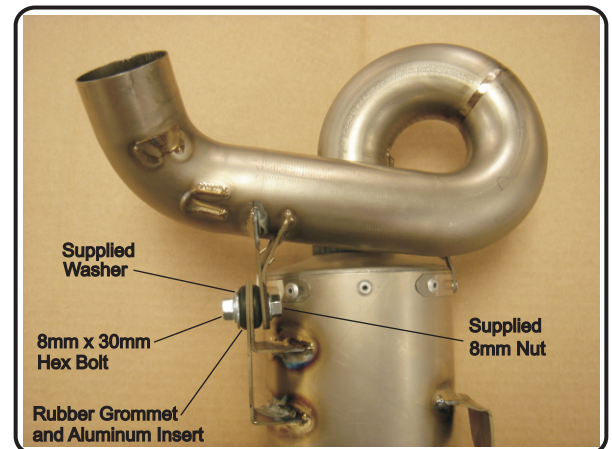


Fig. 6

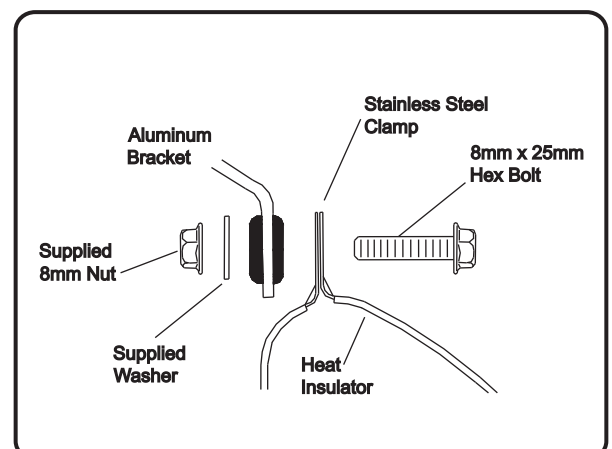
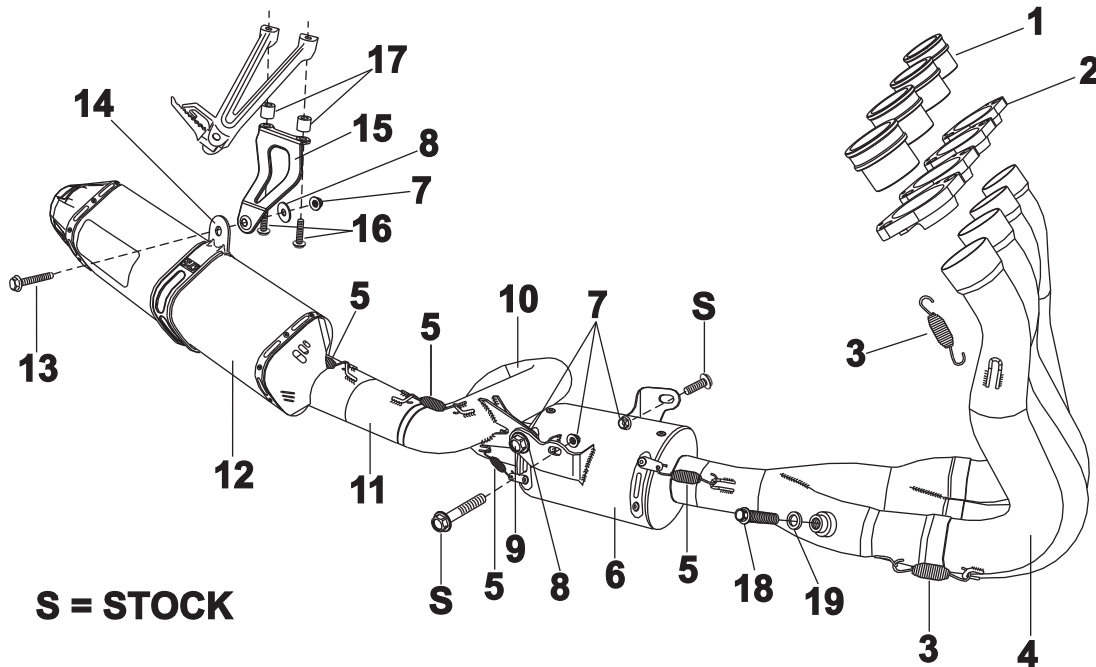


Fig. 7

#110407(2,5,7)



S = STOCK

Parts Diagram

NO.	DESCRIPTION	QTY	PART #
1	Yoshimura Stainless Steel Manifold	4	YZ616SDM
2	Yoshimura Aluminum Flange	4	YZ616SDR-01
3	Medium Race Spring	8	RACE-SPS-1
4	Yoshimura Header	1	1104-404
5	Small Race Spring	8	RACE-SPX-1
6	Yoshimura Oval Muffler	1	1104075-CMA
7	Flanged 8mm Nut	4	8MMNUT
8	Large Washer	2	8MMWASHERL
9	8mm x 30mm Hex Head Bolt	1	M8X30H
10	Yoshimura Tailpipe #1	1	1104-439
11	Yoshimura Tailpipe #2	1	1104-440
12	Yoshimura TRC Muffler with Carbon Fiber Sleeve with Stainless Steel Sleeve with Titanium Sleeve	1	CRTRC126WR SRTRC126W TRTRC126W
13	8mm x 25mm Hex Head Bolt	1	M8X25H
14	Stainless Steel Muffler Clamp Stainless Steel or Titanium Sleeve use Carbon Fiber Sleeve use	1	CTS081X CTS081
15	Aluminum Muffler Bracket (Retains Passenger Peg)	1	1104AB2-B
16	8mm x 45mm Hex Head Bolt	2	M8X45H
17	Spacers for Aluminum Muffler Bracket	2	1104AB-SPC
18	12mm X 8mm Flanged Hex Head Bolt	1	M12X8H
19	12mm Crush Washer	1	12MMCW
**	Muffler Clamp Heat Insulator	1	HT SHLDTRS
**	Rubber Grommet	2	Z1022
**	Aluminum Insert For Rubber Grommet	2	8X127SP
**	Spring Puller Tool	1	ST-200
**	Yoshimura Vinyl Sticker	2	17028-BLK

Nuts and Bolts Guide (Actual Size):

