



# PERFORMANCE EXHAUST SYSTEM

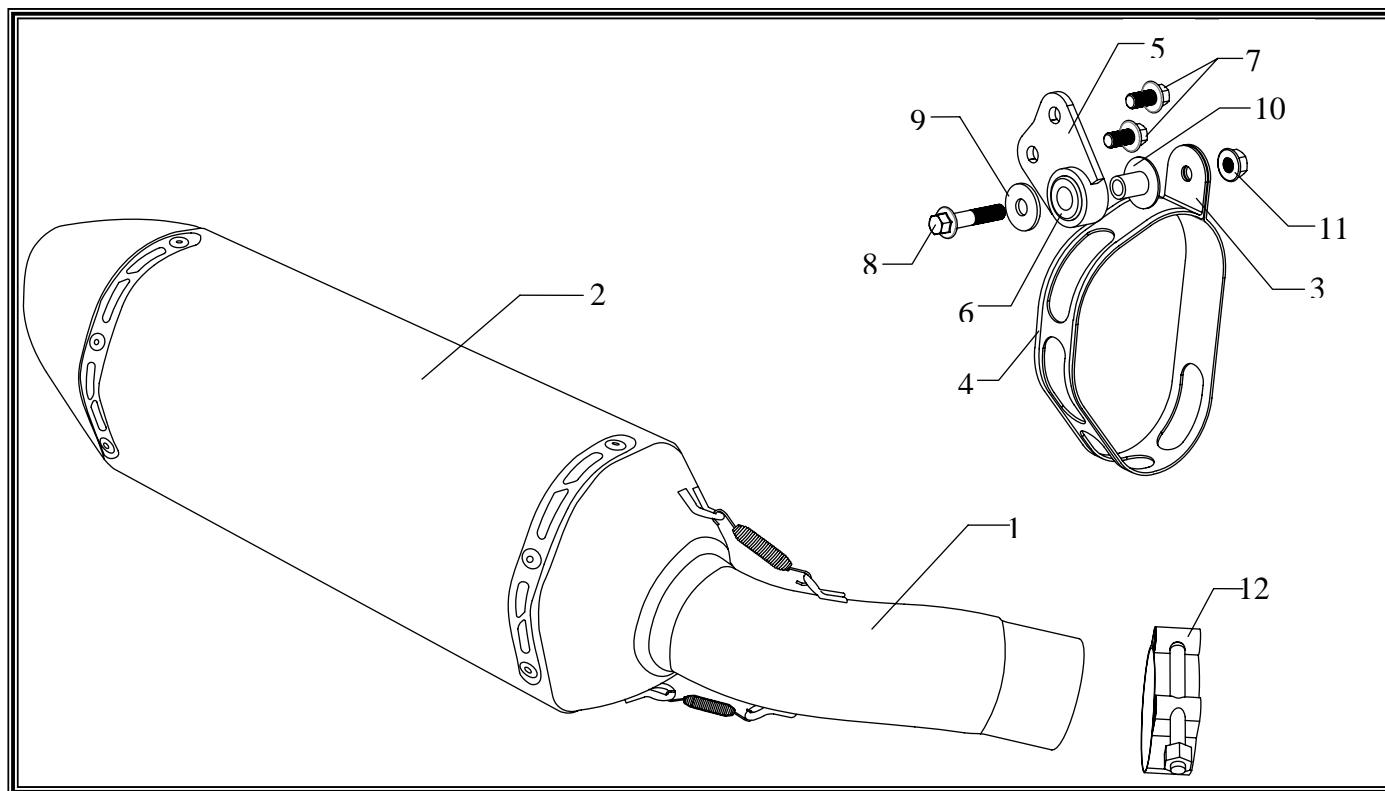
## APPLICATION

| YEAR      | MODEL      |
|-----------|------------|
| 2011-2012 | Yamaha FZ8 |

## PRODUCT

|            |  |
|------------|--|
| 1380020220 | R77 Stainless Steel Slip-On Exhaust System with Carbon Fiber Sleeve; Carbon Fiber Endcap       |
| 1380020520 | R77 Stainless Steel Slip-On Exhaust System with Stainless Steel Sleeve; Carbon Fiber Endcap    |
| 1380020550 | R77 Stainless Steel Slip-On Exhaust System with Stainless Steel Sleeve; Stainless Steel Endcap |

|   |  |
|---|--|
| ! | This product is designed for use in closed course racing and is not intended for highway use. In the state of California, it is illegal to modify the emission control system, which includes the fuel injection of any vehicle.   |
| ! | You must know how to remove and replace your stock exhaust in order to install this product otherwise have it installed by a professional mechanic. Keep all stock parts from your existing system as some components may be necessary to install your new Yoshimura exhaust depending on the application. |
| ! | Read through all instructions before beginning installation. Exhaust system can be extremely hot. Let motorcycle cool down before beginning installation. Always wear hand and eye protection and take precautionary measures to avoid injury.   |



| No. | Part #                                   | Description   | Qty |
|-----|--|---|-----|
| 1   | 13800-435                                | Yoshimura Tailpipe  | 1   |
| 2   | CRR77F126W<br>SRR77F126W<br>SRR77126W-SS | Yoshimura Muffler<br>CF Sleeve; CF Endcap<br>SS Sleeve; CF Endcap<br>SS Sleeve; SS Endcap | 1   |
| 3   | 1121-MPCR<br>1121-MPCR-X                 | Muffler Clamp<br>CF Sleeve<br>SS Sleeve   | 1   |
| 4   | HT SHLDR77                               | Yoshimura Heatshield  | 1   |
| 5   | 13800-BRKT                               | Muffler Mount Bracket   | 1   |
| 6   | 011257-00                                | Rubber Bushing  | 1   |
| 7   | M8X16H                                   | 8mm x 16mm Hex Bolt   | 2   |

|    |                      |   |   |
|----|----------------------|---|---|
| 8  | M8X40H               | 8mm x 40mm Hex Bolt                         | 1 |
| 9  | 8MMWASHERL           | 8mm Washer                                  | 1 |
| 10 | ALS-001              | Aluminum Spacer                             | 1 |
| 11 | 8MMNUT               | 8mm Nut                                     | 1 |
| 12 | 20063                | Exhaust Clamp                               | 1 |
| ** | ST-200               | Spring Puller Tool                          | 1 |
| ** | 17029                | Yoshimura Sticker Sht                       | 1 |
| ** | INS-03-K<br>INS-04-K | Low Volume Insert<br>SS Endcap<br>CF Endcap | 1 |

## **-TOOLS REQUIRED-**

*Metric Socket Set*

*Combination Wrench Set*

*Torque Wrench*

*Metric Allen Wrench Set*

## **-REMOVAL-**

1. **Remove the heatshield bolts and heatshield.**
2. **Loosen exhaust clamp.**
3. **While securely supporting the muffler, remove the muffler mount bolt and carefully remove the stock muffler.**
4. **Remove the stock muffler mount bracket.**

## **-INSTALLATION-**

1. *Small parts installation.*
  - a) **Assemble and Install Yoshimura muffler mount bracket using the supplied hardware. (See diagram for orientation.)**
  - b) **Install rubber heatshield on muffler clamp.**
2. *Installing the Yoshimura Slip-On Exhaust System.*
  - a) **Slide on exhaust clamp provided in the kit onto Yoshimura tailpipe.**
  - b) **Install Yoshimura muffler assembly by sliding Yoshimura tailpipe over stock header outlet.**
  - c) **Slide muffler clamp over Yoshimura muffler and secure to Yoshimura muffler mount bracket using the supplied hardware. (See diagram for orientation.)**

**Note: Removal of muffler springs may be necessary in order to twist muffler and/or tailpipe to achieve the desired alignment. Re-install muffler springs after the desired alignment is achieved.**

- d) **Torque muffler mount bracket bolts and muffler mount bolt to 23 Nm. (2.3 kgf-m, 17 ft-lb)**
  - e) **Torque exhaust clamp to 10 Nm. (1.0 kgf-m, 7 ft-lb)**
3. *Fitment check and Notes.*
  - a) **Before starting motorcycle, check for proper clearance between new exhaust system and rear suspension (i.e. tire, swing-arm, brake, rear shock, engine, and etc.) If any problem is found, please carefully follow through the installation steps again. If problem still persists, please call Yoshimura Tech Department at (800) 634-9166 / in CA (909) 628-4722.**
  - b) **It is recommended that the muffler and tailpipe be wiped down with rubbing alcohol to remove oil and fingerprints. This will help prevent tarnishing of the finish after the exhaust is heated up.**
  - c) **NOTE: After starting motorcycle, it is normal for new exhaust system and muffler to emit smoke until oil residue burns off.**