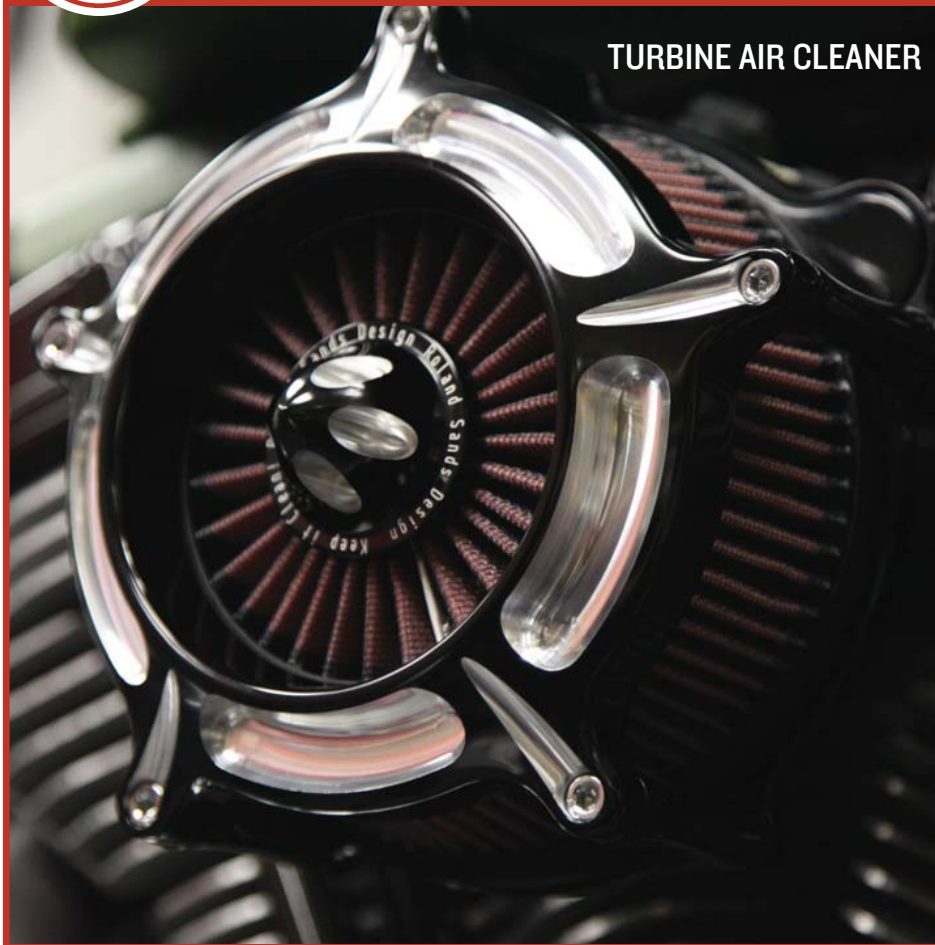




### TURBINE AIR CLEANER



**CAUTION !!! - INTENDED FOR OFF HIGHWAY USE ONLY. DOES NOT COMPLY WITH EMISSIONS REGULATIONS**

PRODUCT DESCRIPTION	Turbo
93-06 Big Twin w/ CV Carb, 02-07 FL w/ Delphi EFI	0206-2037
2001-2012 FXST Softail, 2004-2012 Dyna	0206-2037
2008-2012 FL	0206-2038
1993-2012 Twin Cam w/ S&S E/G Carb	0206-2040

For Fuel injected models, you must recalibrate the ECM or buy an aftermarket fuelpack from Vance & Hines to properly calibrate your new intake. Failure to do so may result in engine damage.

**NOTE:** Inserts are required for use with 1993-1999 HD Evolution applications.

To install inserts thread a 3/8-16 bolt through the insert and thread both the bolt and insert completely into the breather hole then remove the 3/8" bolt. Once the inserts are installed you can begin air cleaner installation.

**NOTE:** Upon assembly use blue 243 loctite on all fasteners. Some models may require use of 3/8-16 to 1/2-13 thread reducers (supplied).

1. Turn your motorcycle off. Extinguish all cigarettes and open flames.
2. Remove existing air cleaner and breathers. (Refer to HD owners Manual)
3. Install 2 breathers (6) and backing plate (4) with 2 slotted breather bolts (8) using blue loctite 243, torque to 15 ft. lbs. Install three 1/4-20 bolts (1), torque to 8 ft. lbs.

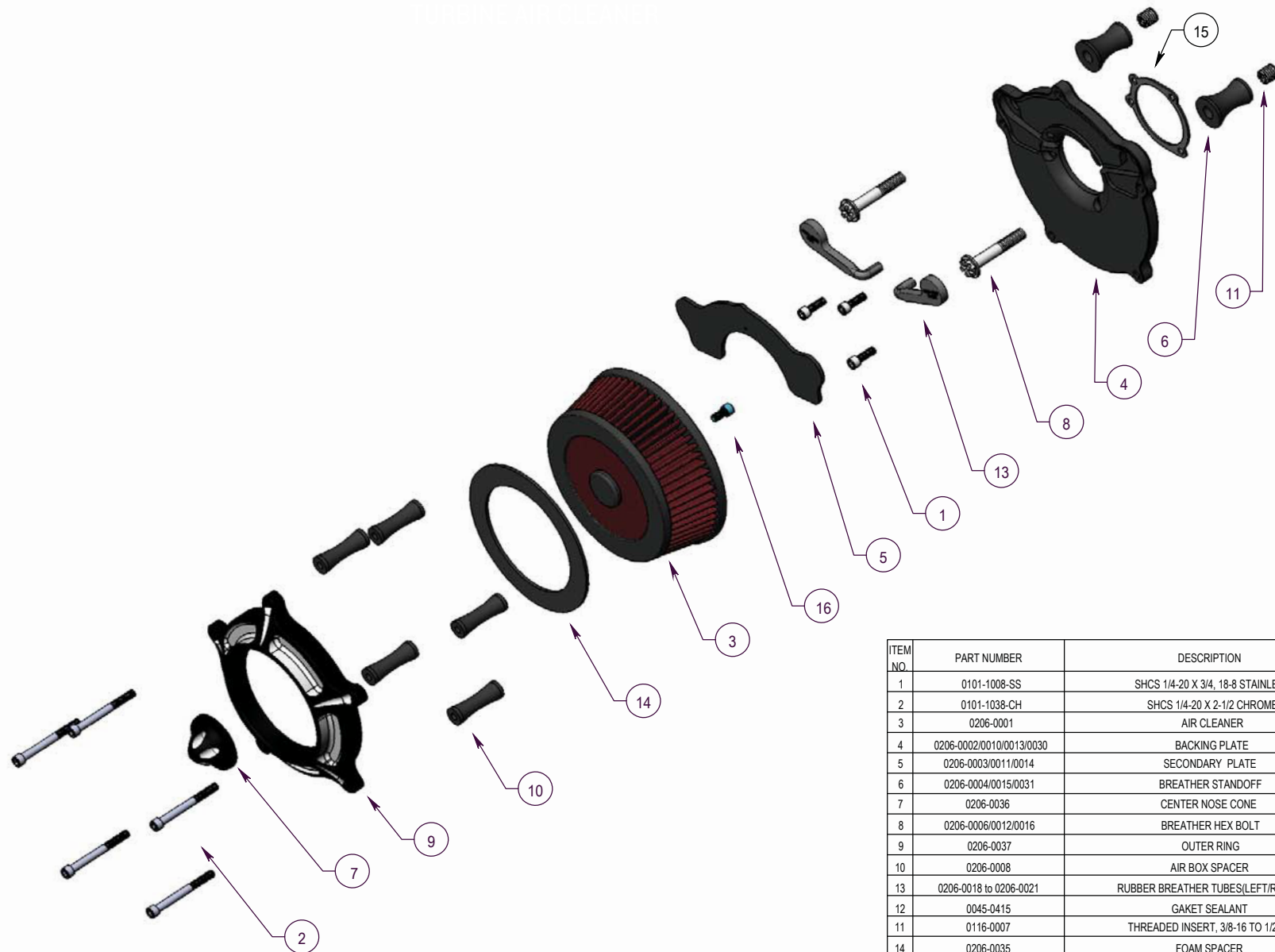
**NOTE:** For 08/09 FL models reuse throttle body support bracket as shown in Fig. A

4. Install rubber breather tubes (13) as shown in Fig. B. They should fit snugly into the machined recesses.
5. Install the secondary plate (5) and ensure that it sits flat and there is no obstruction from the breather tubes below.
6. Install (3,7,9,14,16) as an assembly with five spacers (10) using five 1/4-20 x 2 1/2 bolts (2) to backing plate (4), torque to 8 ft. lbs.

**NOTE:** Do not remove nose cone from air filter unless necessary. It is torqued with red loctite 271 from RSD. If you must remove nose cone to replace or clean air filter, torque to 8 ft-lbs with red loctite 271.

7. Fire that bitch up and go do some laps.





ITEM NO.	PART NUMBER	DESCRIPTION	QTY.
1	0101-1008-SS	SHCS 1/4-20 X 3/4, 18-8 STAINLESS	3
2	0101-1038-CH	SHCS 1/4-20 X 2-1/2 CHROME	5
3	0206-0001	AIR CLEANER	1
4	0206-0002/0010/0013/0030	BACKING PLATE	1
5	0206-0003/0011/0014	SECONDARY PLATE	1
6	0206-0004/0015/0031	BREATHER STANDOFF	2
7	0206-0036	CENTER NOSE CONE	1
8	0206-0006/0012/0016	BREATHER HEX BOLT	2
9	0206-0037	OUTER RING	1
10	0206-0008	AIR BOX SPACER	5
11	0206-0018 to 0206-0021	RUBBER BREATHER TUBES(LEFT/RIGHT)	1
12	0045-0415	GASKET SEALANT	1
13	0116-0007	THREADED INSERT, 3/8-16 TO 1/2-13	2
14	0206-0035	FOAM SPACER	1
15	0206-0038/0039/0040	GASKET	1
16	0101-1004	SHCS 1/4-20 X .50 ZINC PLATED	1

For questions pertaining to the installation of this product, please contact our technical department at 1-800-479-4037