

INSTALLATION INSTRUCTIONS

DRAG SPECIALTIES SADDLEBAG SUPPORTS P/N 3501-0964

ATTENTION INSTALLER (if other than owner): Please forward this Instruction Sheet to the purchaser of this product. These instructions contain valuable information necessary to the end user.

INTRODUCTION: These instructions describe the procedure for properly installing the saddlebag supports for 2008-2016 Dyna models.

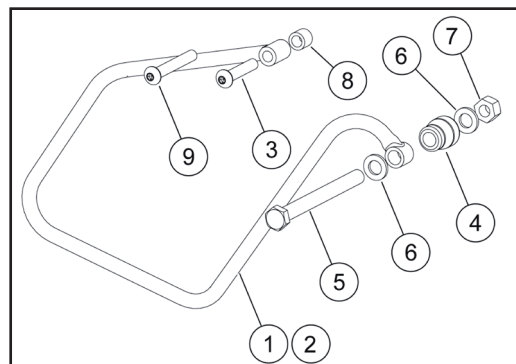
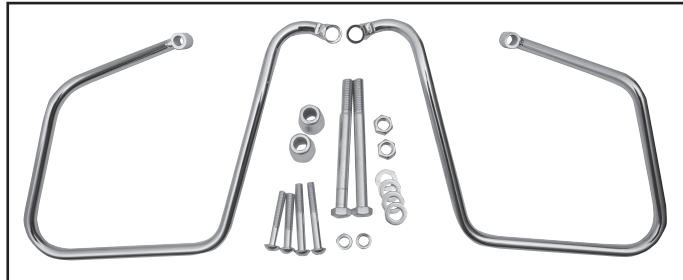
Review these instructions carefully before beginning, as they contain important information. Please retain for future reference.

Particularly important information is distinguished in these instructions by the following notations:

NOTE: A NOTE provides key information to make procedures easier or clearer.

CAUTION: A CAUTION indicates special procedures that must be followed to avoid damage to the motorcycle and/or accessories.

WARNING: A WARNING indicates special procedures that must be followed to avoid injury to a motorcycle operator or person inspecting or repairing the motorcycle.



ADDITIONAL PARTS REQUIRED:

Separate purchase of LOCTITE® 243 - Threadlocker and Sealant (Blue) is required for proper installation of this kit. Loctite is available from your Drag Specialties® dealer.

NOTE: This Instruction Sheet references service manual information. A service manual for your model motorcycle is required for this installation and is available from your Drag Specialties dealer.

ITEM DESCRIPTION (QUANTITY)

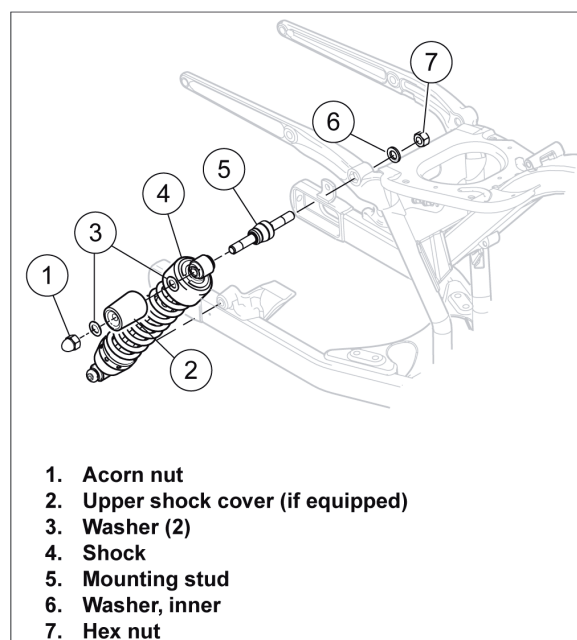
| | |
|---|--|
| 1 | Support, saddlebag, right |
| 2 | Support, saddlebag, left |
| 3 | Screw, button-head (2) (for FXDWG and FXDF models) (Short) |
| 4 | Spacer, shock upper (2) |
| 5 | Screw, Hex-head (2) |
| 6 | Washer (4) |
| 7 | Nut, Hex (2) |
| 8 | Spacer (2) |
| 9 | Screw, button-head (2) (for all models except FXDWG and FXDF) (Long) |

PROCEDURE:

REMOVAL

NOTE: Perform all of the procedures in this Instruction Sheet on one side of the vehicle before performing any removal or installation steps on the other side.

1. Remove the seat and pillion (if required) following the instructions in the service manual.
2. See FIG. 1. Remove acorn nut (1), washers (3), mounting stud (5), washer (6) and nut (7). Discard the hardware.
3. **FOR ALL MODELS EXCEPT FXDB AND FXDWG MODELS:** Remove and save the upper shock cover (2) (if equipped).
FOR FXDB AND FXDWG MODELS: Remove and discard the upper shock cover (2).
4. See FIG. 2. Remove and discard the fender mounting bolt (11) from the fender support cover.
5. **FOR ALL MODELS EXCEPT FXDF:** Remove the spacer (12). Save for installation.



1. Acorn nut
2. Upper shock cover (if equipped)
3. Washer (2)
4. Shock
5. Mounting stud
6. Washer, inner
7. Hex nut

Figure 1. Remove Rear Shock Absorber



INSTALLATION INSTRUCTIONS

DRAG SPECIALTIES SADDLEBAG SUPPORTS P/N 3501-0964

INSTALLATION:

1. See FIG. 2. Apply Loctite 243 - Threadlocker and Sealant (Blue) to the threads of the mounting bolt (7).
2. Install the saddlebag support (5) to the shock absorber (4) with nut (1), washer (2), spacer (3), washer (6) and bolt (7).
3. **FOR ALL MODELS:** Apply Loctite 243 - Threadlocker and Sealant (Blue) to the threads of the mounting bolt (8 or 9).
FOR FXDWG MODELS: Install the rear mounting point of saddlebag support with a short button-head screw (8).
FOR FXDF MODELS: Install the rear mounting point of the saddlebag support with the short button-head screw (8). Verify that the stock spacer (12) is in the correct position.

FOR ALL OTHER MODELS: Install the rear mounting point of the saddlebag support with the long button-head screw (9) and spacer (10).

4. Tighten the upper shock bolt (7) to 75-85 ft.-lbs.

5. Tighten the rear mounting screw (8 or 9) to 12-18 ft.-lbs.

WARNING!: Before operating the motorcycle, be sure all of the hardware is tight.

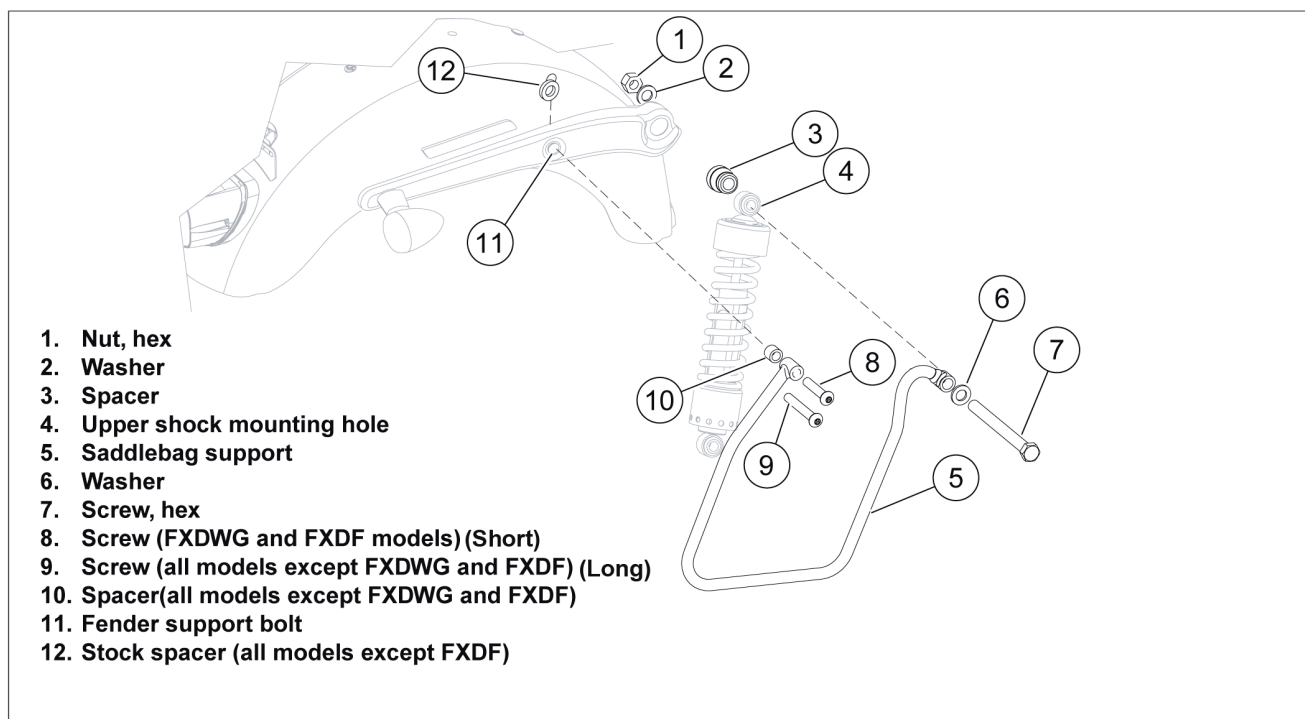


Figure 2. Install Saddlebag Support

