



Custom Dynamics® 7" LED Halo Headlight Trim Ring Installation Instructions

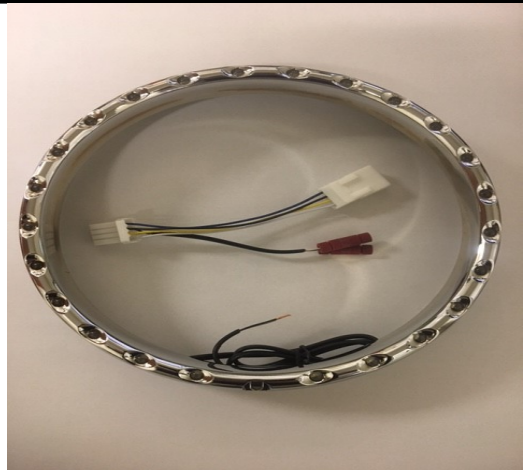
We thank you for purchasing the Custom Dynamics® LED Halo Headlight Trim Ring. Our products utilize the latest technology and high quality components to ensure you the most reliable service. We offer one of the best warranty programs in the industry and we back our products with excellent customer support, if you have questions before or during installation of this product please call Custom Dynamics® at 1(800) 382-1388.

Part Number: CDTB-BAT-W-B CDTB-BAT-W-C

Package Contents:

- LED Halo Headlight Trim Ring (1)
- 8-32 x 1" Black or Polished Screw (1)
- Trim Ring Harness with Posi-Locks™ (1)

Fits: 2006-2013 Harley Davidson® Electra Glide®, Ultra Limited, Street Glide® & Tri Glide® Models (Including CVO) DOES NOT Fit Road King®



Installation:

1. Carefully remove components from the packaging. Take care removing the harness as to not damage the wiring or pull any wires out of the connectors.
2. Consult owner's manual for replacing headlamp before beginning. Remove the stock headlamp trim ring from the mounting Assembly.
3. Turn over stock trim ring and locate the "W" clip on the inside. See Figure A & B Below.
4. Remove the rubber gasket from the area around the clip, see figure C. Next, Place a thumb over the center square part of the clip & an index finger behind the last leg of the W as shown in photo D. Pull with the right index finger and release the thumb, the clip will come free.

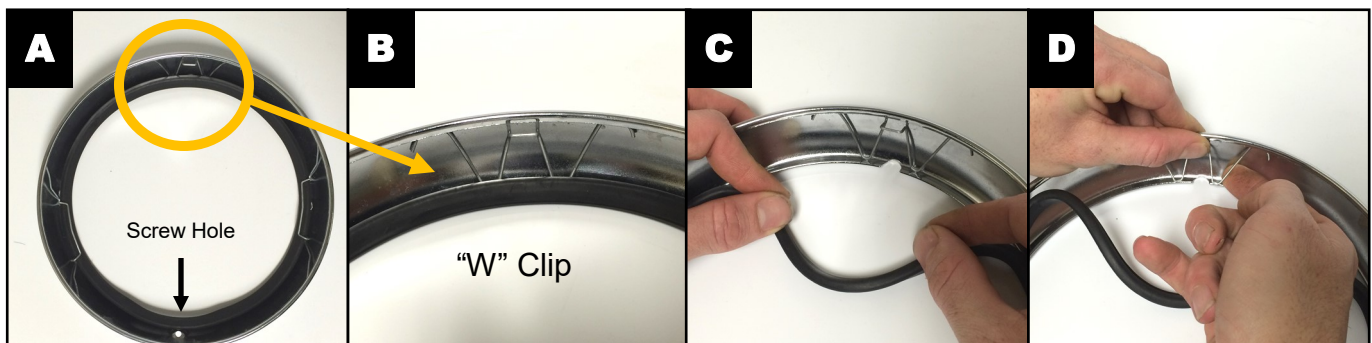


Please read all Information below before Installation

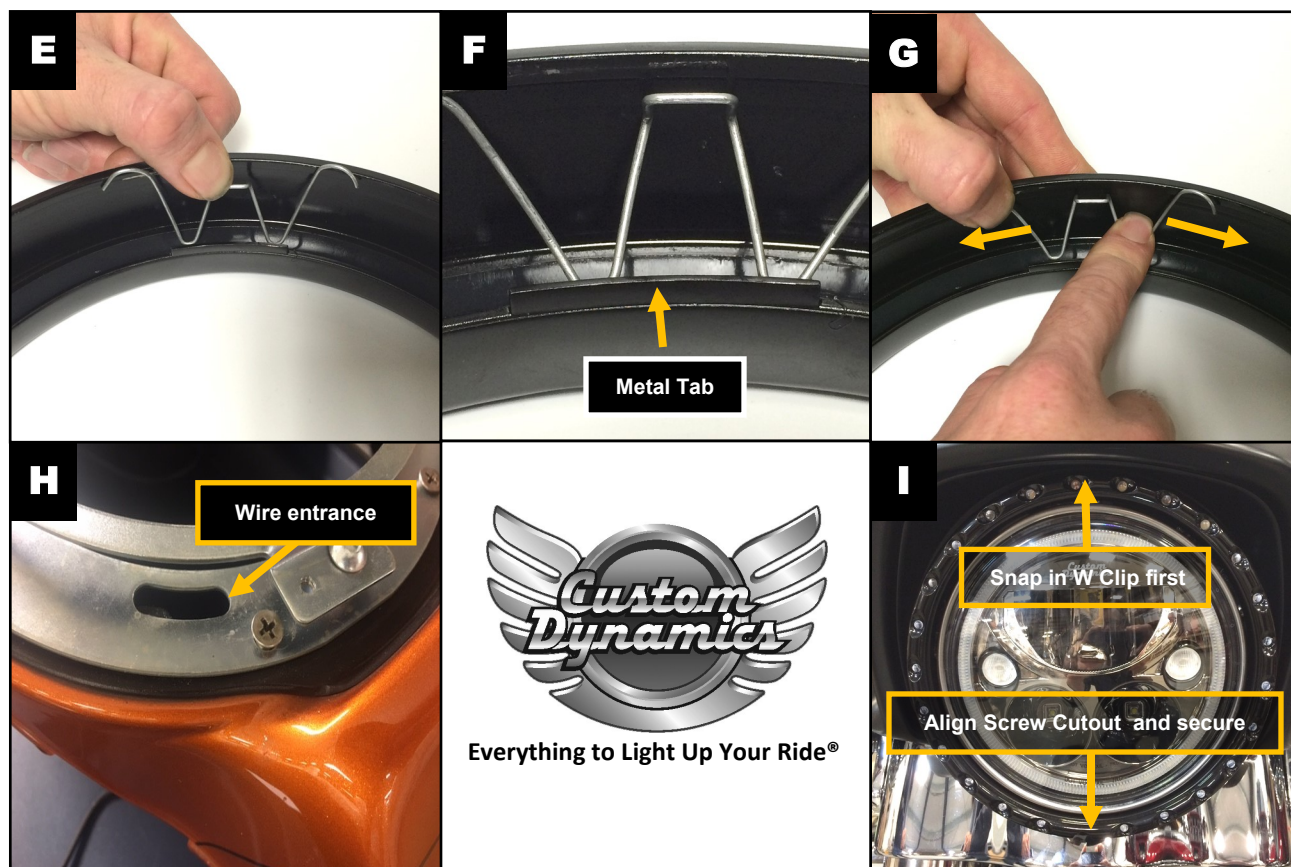
Safety First: Make sure the bike is parked on a level surface and bike 's mechanical components are cool to the touch. To prevent electrical shock, disconnect the negative battery terminal from the battery before beginning installation.

Note: You will have to remove the outer front fairing in order to complete this installation. Please refer to your manufacturer service manual if unsure of this procedure.

Care: Take special care in cleaning the Trim Ring. Never use abrasive polishes or cleaners as these may scratch the finish.



Questions? Call us at: 1 (800) 382-1388 M-TH 8:30AM-5:30PM / FR 9:30AM-5:30PM EST

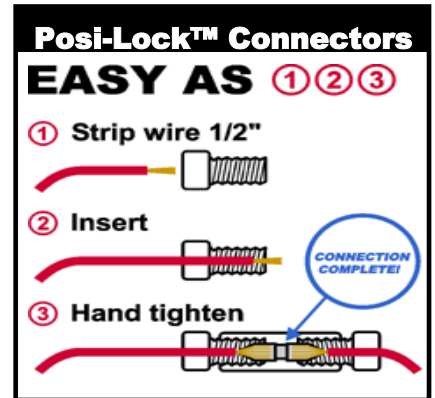
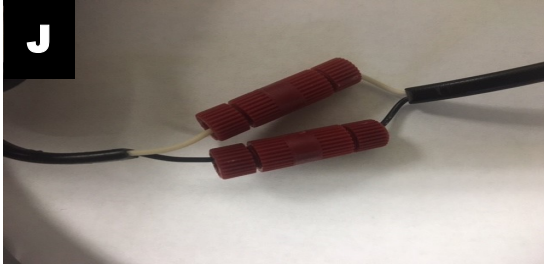


Installation:

5. Prepare the new trim ring to accept the W clip. Set on soft, clean surface to avoid harming the finish, face up with the screw hole pointing down to the bottom. Set the W clip in behind the metal tab at the top, see figures E & F.
6. Hold the clip as shown in figure G and lightly push the end of the W clip arm outward until it snaps behind the lip of the trim ring. Do this for the other side as well. The trim ring is now prepped for installation.
7. Refer to your bike's detailed service manual for instructions on removing the outer front fairing and wind-shield. Once fairing is removed from the bike, set it on a soft clean surface to protect the finish.
8. Feed the new trim ring wire harness through the small opening on the headlamp mounting frame as shown in figure H.
9. Grab the wires from the inside of the fairing and pull until there is no slack left on the outside.
10. Mount the trim ring to the headlight assembly. Orient the screw cutout to the bottom as shown in figure I, then push on the top of the trim ring to snap the center arm of the W clip into place on the fairing.
11. Once the trim ring is in place and screw cut out is aligned, use the provided 8/32 X 1 screw to secure the trim ring to the fairing.

Installation Instructions - Page 3

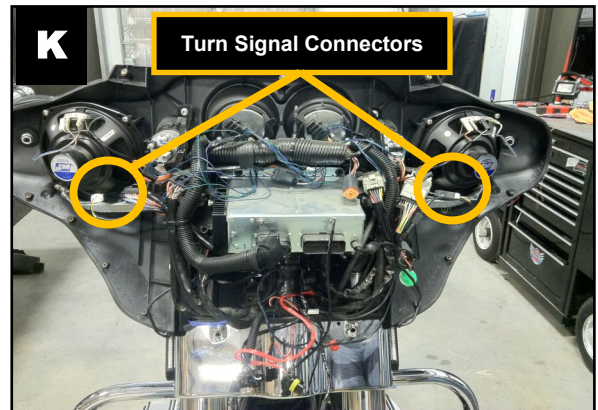
12. Attach the wires of the trim ring harness with the (2) Posi-Lock™ connectors to the trim ring wires. White wire to white wire. Black wire to black wire. See figure J.



Installation: Headlight Trim Ring Harness to bike

13. Look for the connectors on the inner fairing that goes to each front turn signals. The connectors are located in the areas circled in figure K.
14. Once the turn signal harness connectors are located on the bike, unplug either side.

Note: Having an extra set of hands is helpful for the next steps. The outer fairing will have to rest near the inner fairing in order to make the wire connections. One person should hold the fairing in place, while the other performs the connections.



15. Install the Headlight Trim Ring harness at the turn signal harness connectors you unplugged in step 13. Make sure to plug one connector into the fairing harness and the other connector into the plug going to the stock turn signals.

Installation: Finish & Test

16. Secure trim ring wire harness with tie-wraps (not included). Make sure they will not get pinched when the fairing is secured.
17. Set the outer fairing back in place on the bike, but do not secure yet. Be sure to plug the headlight connector in.
18. Make sure battery is connected. Turn the ignition key on and test the function of the trim ring. The White LEDs around the ring should be illuminated.
19. Test left and right turn signals for proper operation.
20. Secure the fairing and windshield to the bike.