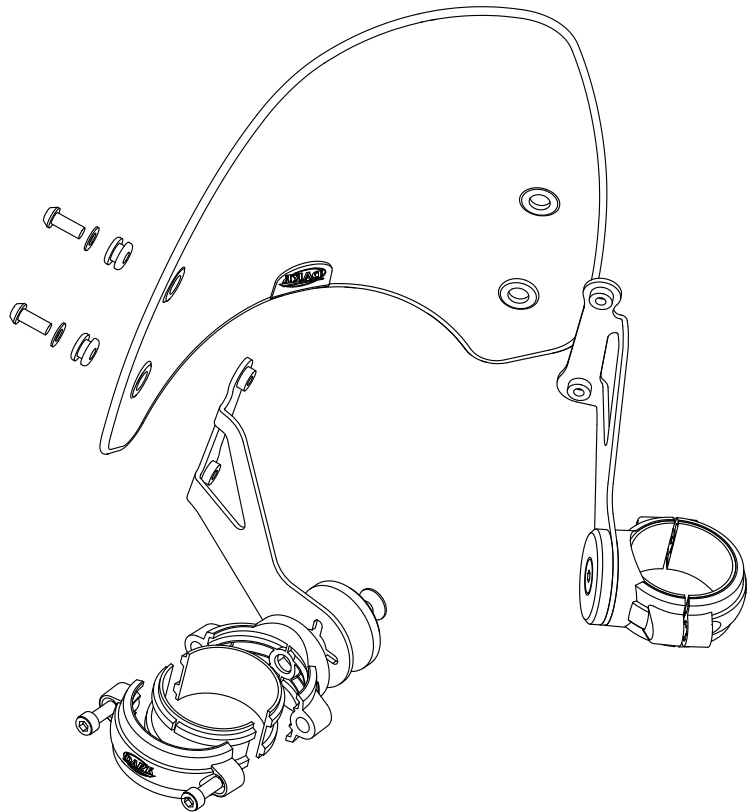




## Dart flyscreen fitting instructions Harley-Davidson Dyna/Softail models

Thank you for purchasing a Dart flyscreen. It has been carefully designed and manufactured to suit a specific motorcycle model and by following these instructions you should encounter no problems with fitting. The kit should comprise:



- 1 x polycarbonate screen
- 4 x EPDM rubber grommets
- 1 x left hand mounting bracket
- 1 x right hand mounting bracket
- 4 x stainless hex head machine screws
- 4 x stainless M6 washers
- 4 x rubber collets
- 2 x PlusMount clamp front
- 2 x PlusMount clamp back
- 2 x Anodised aluminium bezel
- 2 x M8 x 16mm countersunk hex head screws
- 4 x M6 x 16mm pan head screws

- 1 Fit the grommets to the screen - this is best achieved from the back of the screen blade.
- 2 Fit the rubber collets into the four clamp components, ensuring they fit snugly.
- 3 Depending on your bike and screen, there are two ways of fitting the clamp onto the fork leg: with the PlusMount disc on the inside or the outside. See the list below for your bike. Then place the clamps on the fork legs, a little below the top yoke and secure with the four M6 x 16mm screws. Don't tighten these fully yet.
- 4 Push the steel brackets onto the PlusMount crosses (they may be quite a tight fit), add the anodised aluminium discs and secure with the M8 x 16mm countersunk screws. Tighten these fully.
- 5 With both brackets fixed, hold the screen blade in position and fit the hexagon head machine screws with their washers, ensuring that they engage in the captive nuts on the brackets. Do not tighten these yet.
- 6 Now everything is in position, you can adjust the height of the screen above the headlight to your satisfaction, and make sure it's good and central. Then gradually tighten the PlusMount clamp screws until there is the smallest of gaps between the two clamp halves. Now tighten the screen screws until they seat on the brackets.
- 7 Double check that everything is sufficiently tight and if so, fitting is now complete!

### **Harley-Davidson PlusMount disc position:**

***Piranha flyscreen - disc on inside***

***Classic flyscreen - disc on inside***

***Marlin flyscreen - disc on inside***

***Manta flyscreen - disc on outside***

**MAINTENANCE:** No special maintenance is required. Do not use solvents to clean - just warm soapy water. Many proprietary glass cleaners are suitable for polycarbonate - check the label before trying.

**IMPORTANT NOTICE:** Whilst the screen provides a good level of impact protection, it is not warranted unbreakable. It is NOT a substitute for eye protection, which should be worn at all times while riding.