



INSTALLATION INSTRUCTIONS

WINCH MOUNT KIT

Part Number: 93790

Application: Honda Pioneer 1000

GENERAL SAFETY PRECAUTIONS

Your safety, and the safety of others, is very important. To help you make informed decisions about safety, we have provided installation and operating instructions and other information on labels and in this guide. This information alerts you to potential hazards that could hurt you or others. It is not possible to warn you about all potential hazards associated with this product, you must use your own good judgment.

CARELESS INSTALLATION AND OPERATION CAN RESULT IN SERIOUS INJURY OR EQUIPMENT DAMAGE. READ AND UNDERSTAND ALL SAFETY PRECAUTIONS AND OPERATING INSTRUCTIONS BEFORE INSTALLING AND OPERATING THIS PRODUCT.

This guide identifies potential hazards and has important safety messages that help you and others avoid personal injury or death. WARNING and CAUTION are signal words that identify the level of hazard. These signal words mean:

▲WARNING signals a hazard that could cause serious injury or death, if you do not follow recommendations. ▲CAUTION signals a hazard that may cause minor to moderate injury, if you do not follow recommendations.

This guide uses NOTICE to call attention to important mechanical information, and Note: to emphasize general information worthy of special attention.

▲ WARNING

IMPACT AND MOVING PARTS ENTANGLEMENT HAZARD

Failure to observe these instructions could lead to severe injury or death

- **Always** take time to fully read the Instructions and/or Operations Guide, and/or Basic Guide to Winching Techniques, in order to understand your winch and its operations.
- **Always** use extreme caution when drilling on any vehicle. Make sure that all fuel lines, brake lines, electrical wires, and other objects are not punctured or damaged when/if drilling on the vehicle. Thoroughly inspect the area to be drilled (on both sides of material) prior to drilling, and relocate any objects that may be damaged. Failure to inspect the area to be drilled may result in vehicle damage, electrical shock, fire or personal injury.
- **Always** wear safety glasses when installing this kit. A drilling operation will cause flying metal chips. Flying chips can cause eye injury.
- **Always** use extreme caution when cutting and trimming during fitting.
- **Always** remove jewelry and wear eye protection.
- **Never** lean over battery while making connections.
- **Never** route electrical cables:
 - o Across any sharp edges.
 - o Through or near moving parts.
 - o Near parts that become hot.
- **Always** insulate and protect all exposed wiring and electrical terminals.
- **Always** install terminal boots as directed in installation instructions.
- **Always** use appropriate and adequate care in lifting components into place.
- **Always** insure components will remain secure during installation and operation.
- **Always** tighten all nuts and bolts securely, per the installation instructions.
- **Always** perform regular inspections and maintenance on the plow mechanism, fasteners, cable and related hardware.
- **Always** replace all worn or damaged parts before operating.
- **Never** operate this WARN product with damaged or missing parts.

Read installation and operating instructions thoroughly.

WARN INDUSTRIES, INC. 12900 S.E. Capps Road,
Clackamas, OR USA 97015-8903, 1-503-722-1200, FAX: 1-503-722-3000
Customer Service: 1-800-543-9276
Dealer Locator Service: 1-800-910-1122
International Fax: 1-503-722-3005

CAUTION

MOVING PARTS ENTANGLEMENT HAZARD

Failure to observe these instructions could lead to minor or moderate injury

- **Always** take time to fully read and understand the installation and Operations Guide included with this product.
- **Never** operate this product if you are under 16 years of age.
- **Never** operate this product when under the influence of drugs, alcohol or medications.

Read installation and operating instructions thoroughly.

NOTICE

EQUIPMENT DAMAGE

- **Always** refer to the Installation and Specification Guide, supplied in the winch kit, for all wiring schematics and specific details on how to wire this WARN product to your vehicle.

Read installation and operating instructions thoroughly.

NOTES

BEFORE YOU BEGIN

TABLE OF CONTENTS

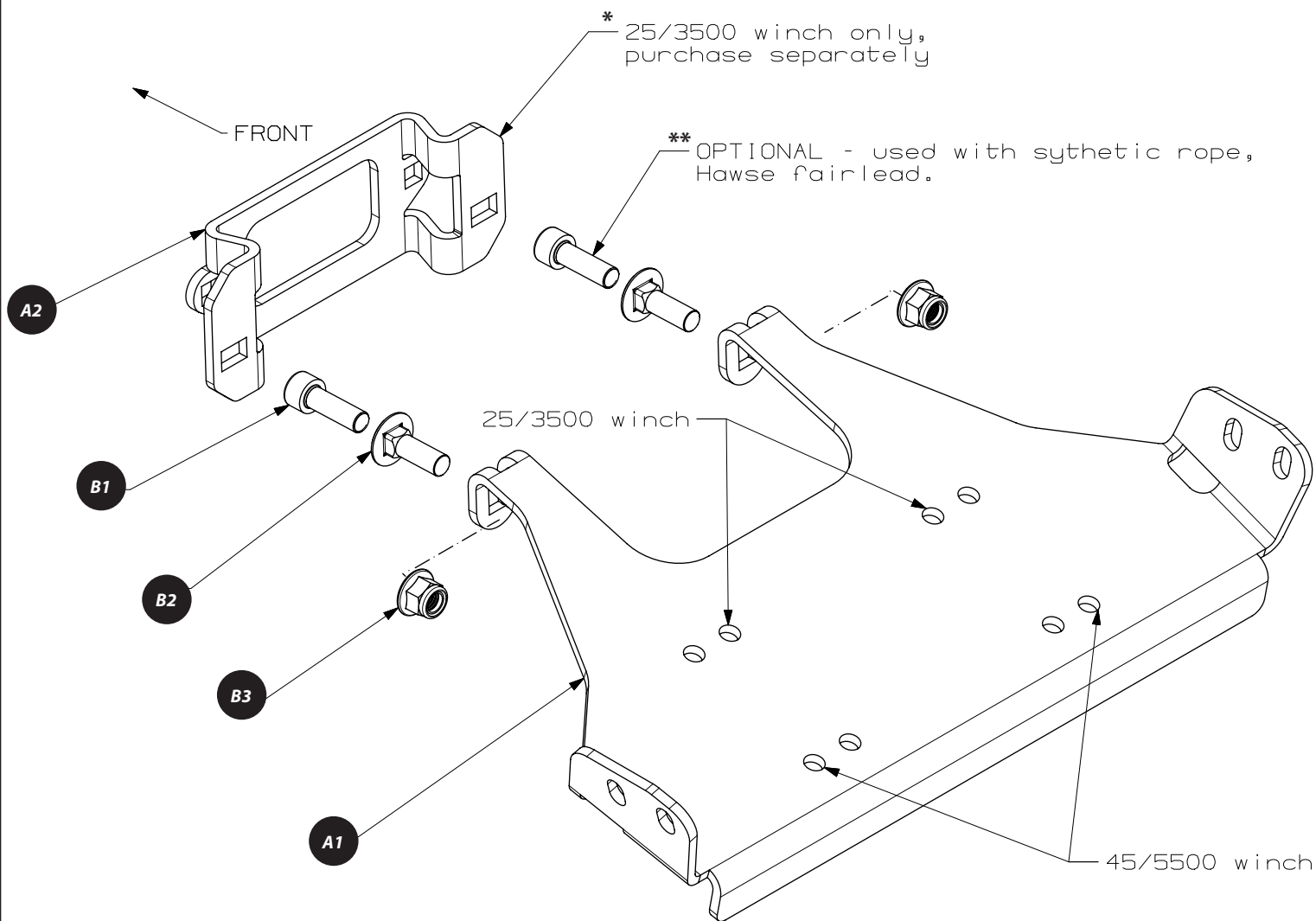
Tools Required	page 2
Parts List.....	page 3
Torque Specifications.....	page 3
Installation	page 4-7
Maintenance/Care.....	page 7

TOOLS REQUIRED

- Standard and metric wrenches and sockets

PARTS LIST

Item	Part Number	Description	Qty.	Item	Part Number	Description	Qty.
A1	93792	Winch Mounting Bracket	1	B1	85802	**M10 Hex Bolt	2
A2	107335	*Fairlead Adapter Kit	1	B2	101857	M10 Carriage Bolt	2
				B3	87232	M10 Locknut	2



TORQUE SPECIFICATIONS

Please use the recommended torque specifications when assembling this product unless otherwise specified in the instructions.

FASTENER SIZE		FASTENER TORQUE		FASTENER SIZE		FASTENER TORQUE	
	lb-ft	(N.m)		M4	(2)	3	
1/4"	8	(11)		M5	(4.5)	6	
5/16"	17	(23)		M6	(7.5)	10	
3/8"	30	(40)		M8	(18)	25	
7/16"	48	(66)		M10	(37)	50	
1/2"	74	(100)					
9/16"	106	(144)					
5/8"	148	(200)					
3/4"	269	(364)					

INSTALLATION INSTRUCTIONS



Figure 1

1. Remove front brush guard by first removing the three mounting bolts, and one hex socket bolt (each side).

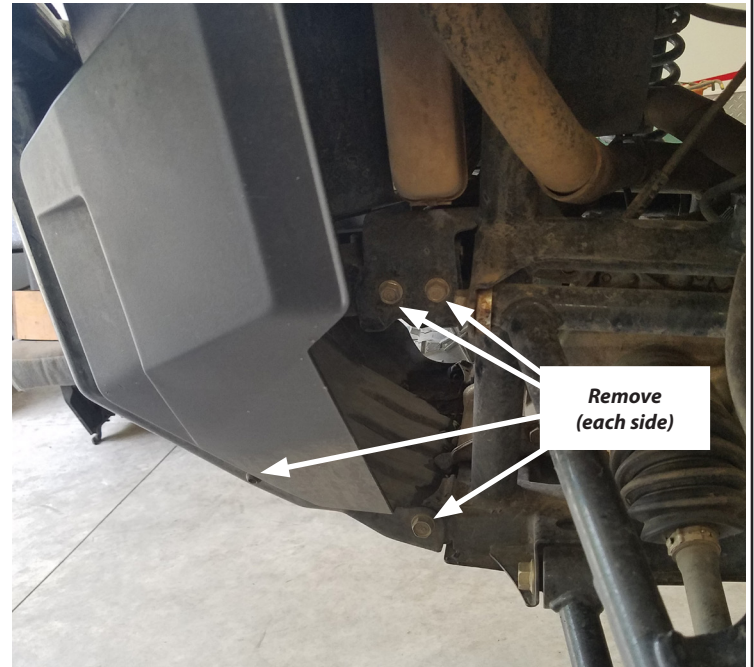


Figure 2

2. Remove brush guard and set aside.

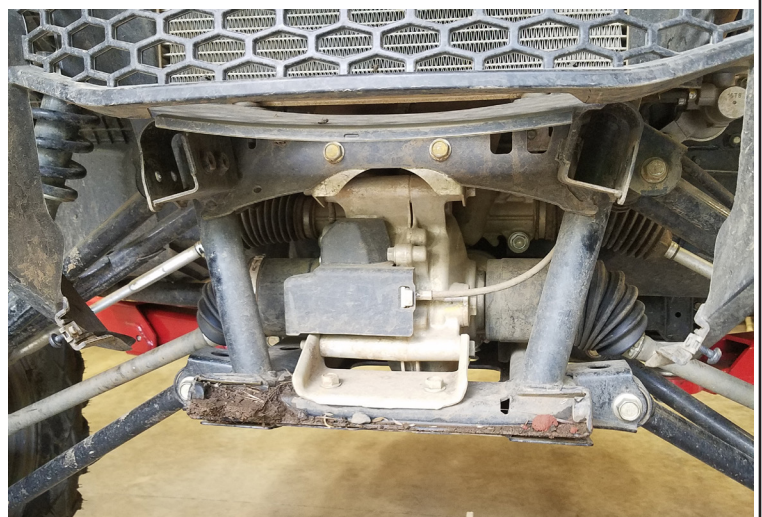


Figure 3

INSTALLATION INSTRUCTIONS

3. Place winch on mount, with clutch knob on passenger side. Align winch feet with proper mounting holes. Refer to exploded view on page 3.
4. Complete attaching winch to mounting bracket. Refer to winch kit installation instructions and use winch kit hardware.
5. Use the long factory brush guard mounting bolts to loosely align winch/winch mount assembly to brush guard. **NOTE: These bolts will be removed once the fairlead is installed and tightened.**
6. With winch in freespool (disengage clutch), feed winch rope through brush guard's fairlead opening, the fairlead adapter bracket (if needed - see NOTE) and fairlead.
NOTE: The fairlead adapter bracket will be used only with 2500 and 3500 winches.
7. Secure winch/winch mount assembly to brush guard by installing fairlead and adapter bracket (if needed) hardware:
 - For hawse fairlead use hardware B1 and B3

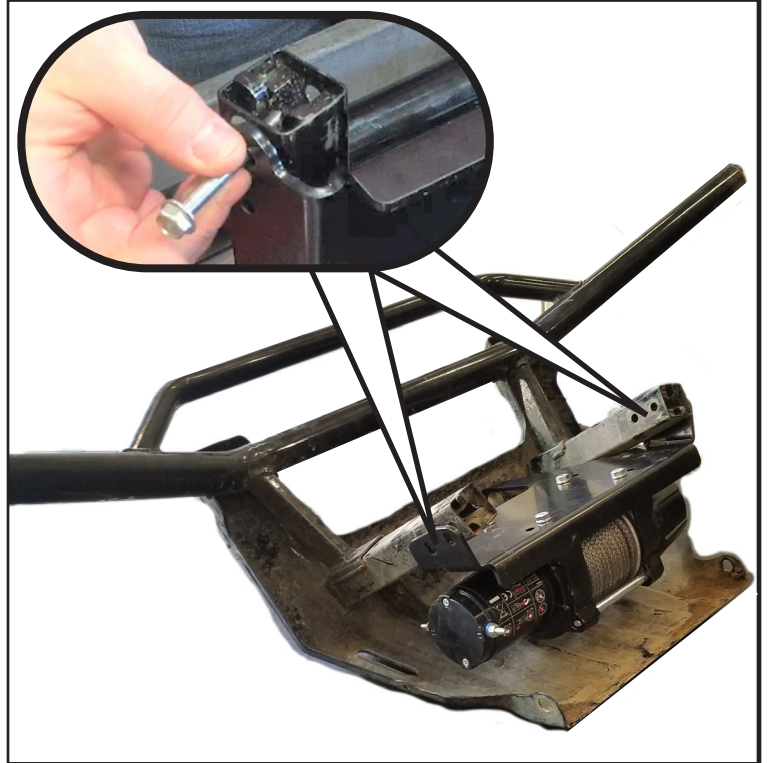
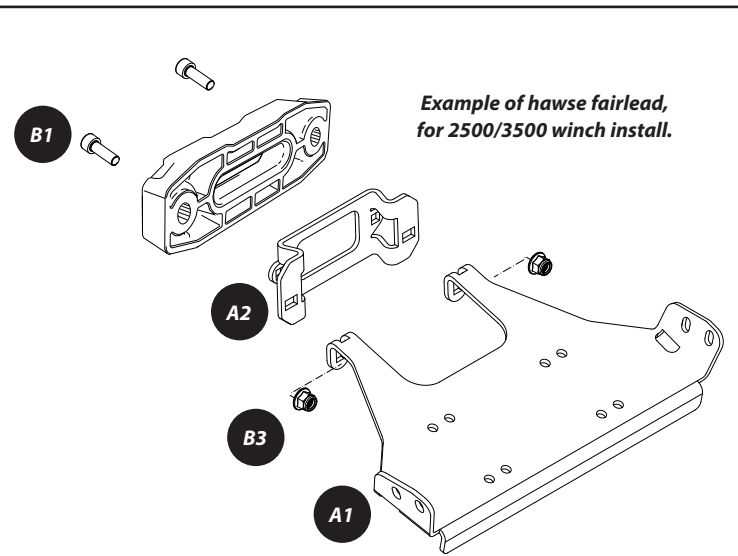


Figure 4



- For roller fairlead use hardware B2 and B3



Figure 5

8. Torque fairlead hardware to specifications on page 3.
9. Remove the long factory brush guard mounting bolts, used for alignment.
10. Locate the yellow and blue cables. Install a terminal boot to each end and fasten ends of cables to the coordinating terminals on the winch terminals. Refer to winch installation instructions.

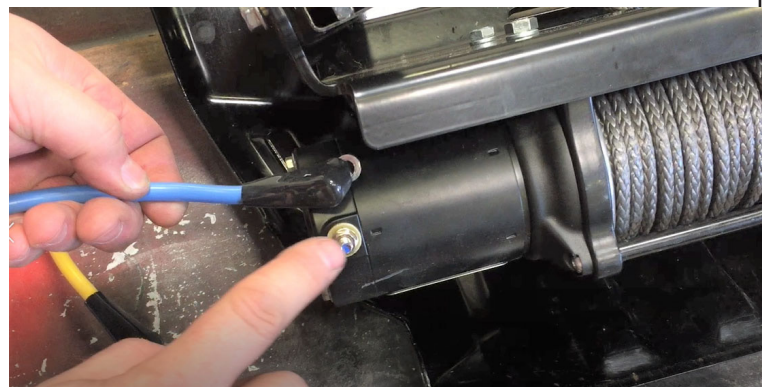


Figure 6

INSTALLATION INSTRUCTIONS

11. Install brush guard/winch assembly to vehicle using factory hardware.



Figure 7

12. Choose a location to mount the winch contactor. *Be sure the blue and yellow ends are able to reach contactor easily.*
13. Mount contactor per winch installation instructions.
14. Route blue and yellow winch power cables along frame upright tube, towards contactor. Use zip ties to secure cables to the frame along the way.



Figure 8

15. Route wires through top plastic continuing to use cable ties to secure wires.

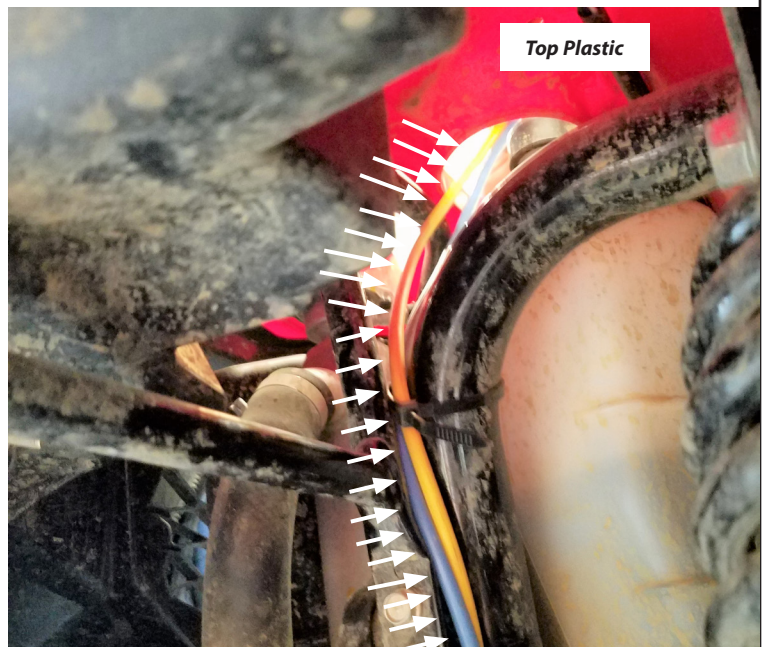


Figure 9

INSTALLATION INSTRUCTIONS

16. Install a terminal boot to the end of the blue and yellow cables and fasten to the corresponding terminals on the contactor with lock washer and nut. Torque to recommended value and seat boots over terminals.
17. Follow winch installation instructions (provided with winch) for complete wiring instructions.
18. Torque ALL hardware to specifications provided.

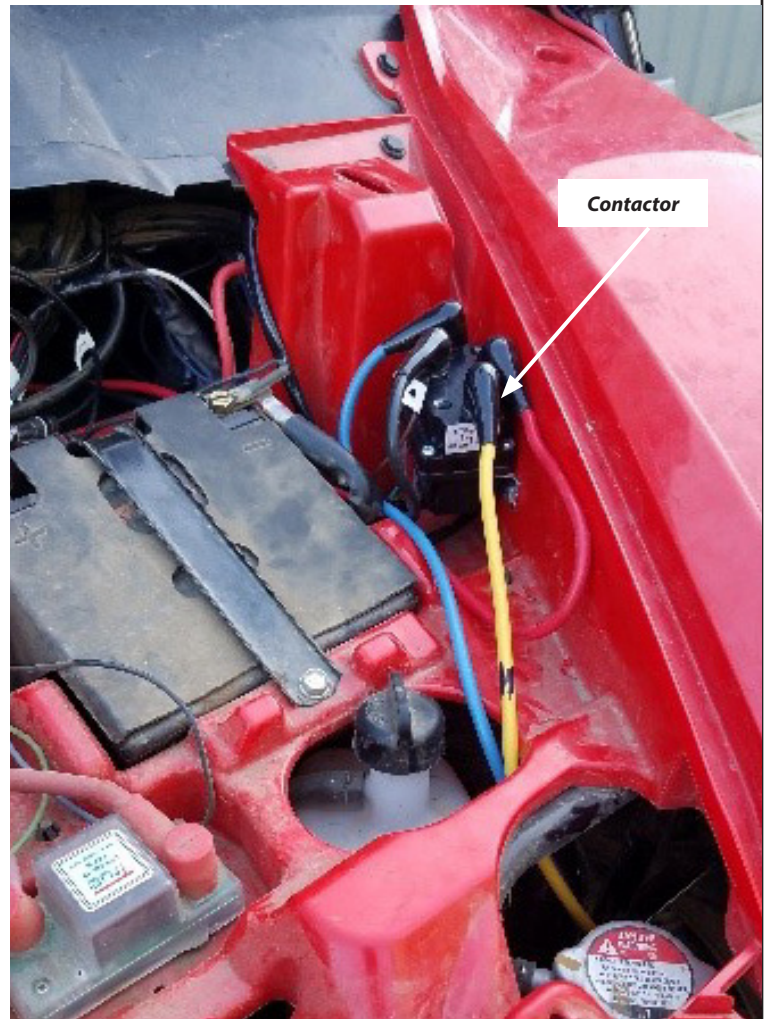


Figure 10

MAINTENANCE / CARE

1. Inspect all parts on the winch, winch mount, and related hardware prior to each use. Replace all hardware that appears rusted or deformed.
2. Inspect all nuts and bolts on the winch, winch mount,, and related hardware prior to each use. Tighten all nuts that appear to be loose. Stripped, fractured, or bent bolts or nuts need to be replaced.
3. Check all cables prior to use. Replace cables that look worn or frayed.
4. Check all moving or rotating parts. Remove debris that may inhibit the part from moving freely.

CARELESS INSTALLATION AND OPERATION CAN RESULT IN SERIOUS INJURY OR EQUIPMENT DAMAGE. READ AND UNDERSTAND ALL SAFETY PRECAUTIONS AND OPERATING INSTRUCTIONS BEFORE INSTALLING AND OPERATING THIS PRODUCT.

