



Custom Dynamics® ProBEAM® LED Halo Fog Lamp Amber Lens Installation Instructions

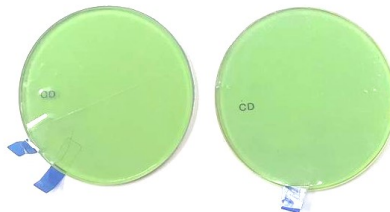
We thank you for purchasing the Custom Dynamics® ProBEAM® LED Halo Fog Lamp Amber Lens. Our products utilize the latest technology and high quality components to ensure you the most reliable service. We offer one of the best warranty programs in the industry and we back our products with excellent customer support, if you have questions before or during installation of this product please call Custom Dynamics® at 1(800) 382-1388.

Part Number: PB-FOG-LENS-Y

Package Contents:

- ProBEAM® LED Halo Fog Lamp Amber Lens (2)
- Instructions

Fits: ProBEAM® LED Halo Fog Lamps (sold separately).



Installation:

1. Remove lens bezel from the fog lamp by turning the bezel counterclockwise.
2. Remove the clear lens with gaskets from the lens bezel.
3. Wearing gloves, to prevent fingerprints on the new Amber Lens, remove the clear protective film from the new Amber Lens.
4. Place the existing lens gasket on the new Amber Lens.
5. Set the new Amber Lens, with the gasket, into the lens bezel as shown in Photo1.
6. Reinstall the lens bezel onto the fog lamp housing.



Questions? Call us at: 1 (800) 382-1388 M-TH 8:30AM-5:30PM / FR 9:30AM-5:30PM EST

06/2022