



Custom Dynamics® Low Rider ST Headlamp Adapter Bracket Kit Installation Instructions

We thank you for purchasing the Custom Dynamics® Low Rider ST Headlamp Adapter Bracket kit. Our products utilize the latest technology and high quality components to ensure you the most reliable service. We offer one of the best warranty programs in the industry and we back our products with excellent customer support, if you have questions before or during installation of this product please call Custom Dynamics® at 1(800) 382-1388.

Part Numbers: CD-LRST-HL-KIT

Package Contents:

- ProBEAM Headlamp Adapter Bracket (1)
- Headlamp Adapter Harness(1)
- 1/4x20 Nylon Jam Nut (4)

Fits: 2022-2023 Harley-Davidson® Softail Low Rider ST (FXLRST) & 2022 Low Rider El Diablo (FXRST).
Compatible only with Custom Dynamics® ProBEAM 5.75" Headlamp PN: 2001-1749/2001-1750 (sold separately).



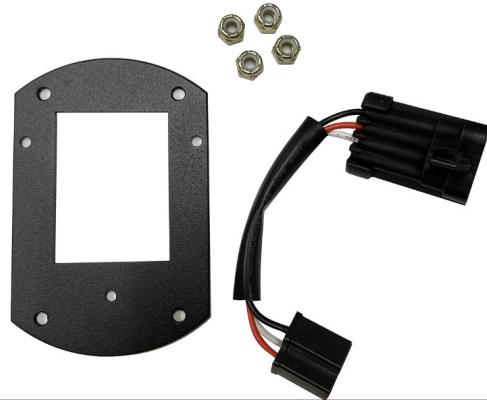
ATTENTION



Please read all Information below before Installation

Warning: Disconnect negative battery cable from battery; refer to owner's manual. Failure to do so may result in electrical shock, injury, or fire. Secure negative battery cable away from positive side of battery and all other positive voltage sources on vehicle.

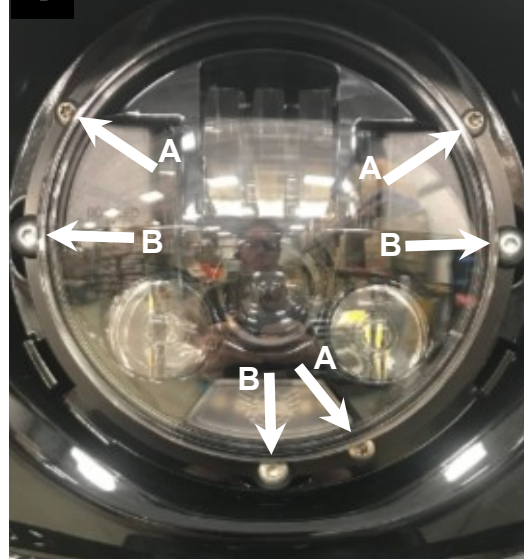
Safety First: Always wear appropriate safety gear including safety glasses when performing any electrical work. It is highly recommended that safety glasses be worn throughout this installation process. Be sure vehicle is on level surface, secure and cool.



Installation:

1. Disconnect negative battery cable from battery; refer to owner's manual if unsure of this process.
2. Remove the OEM headlamp bezel from the fairing by rotating counter clockwise. Store in a safe place for re-installation later.
3. Remove the OEM headlamp mounting bracket and OEM headlamp from the fairing by removing the three Torx Screws on the front of the OEM headlamp mounting bracket. Disconnect the headlight from the OEM headlamp connector. Save the three OEM Torx screws for reinstallation. Refer to Figure 1 Arrow A.

1



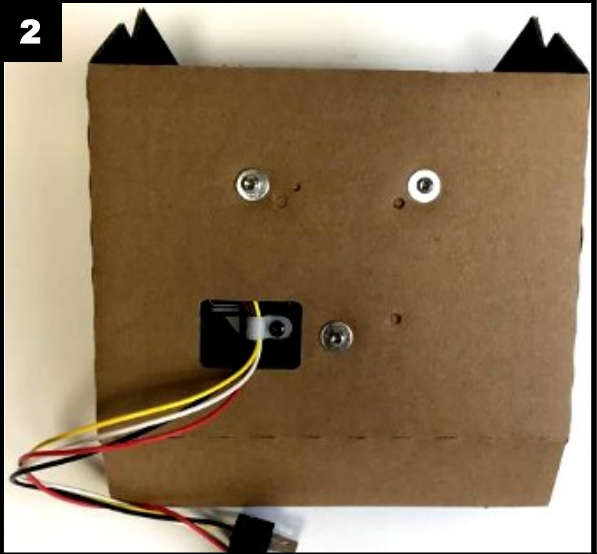
Questions? Call us at: 1 (800) 382-1388 M-TH 8:30AM-5:30PM / FR 9:30AM-5:30PM EST

Installation Instructions - Page 2

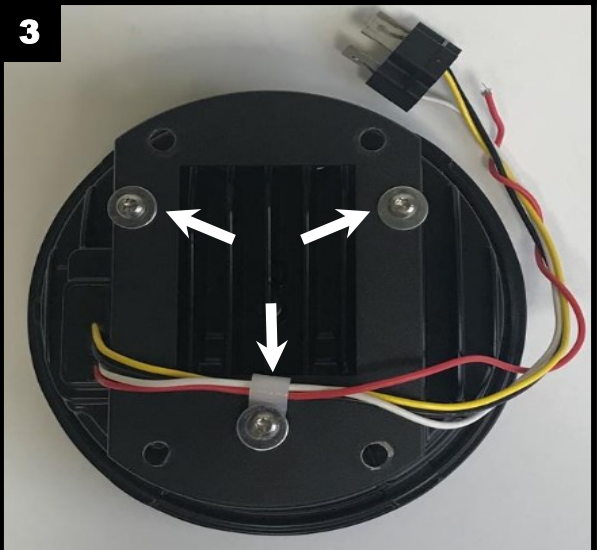
4. Remove OEM headlamp from OEM headlamp mounting bracket by removing the four Torx screws on the back of the headlamp. Save the four OEM Torx screws and the OEM headlamp mounting bracket for reinstallation.
5. Remove the cardboard backing and nylon cable clamp and the three Torx fasteners on the back of the ProBEAM® headlamp and save for reinstallation. Refer to Figure 2.
6. Install the ProBEAM® headlamp to the ProBEAM® Headlamp Adapter Bracket by using two of the Torx fasteners from Step 5. in the top two mounting holes of the ProBEAM® headlamp. Refer to Figure 3.
7. Using the remaining Torx fastener and the nylon cable clamp from Step 5 and mount to the bottom hole of the ProBEAM® headlamp. Refer to Figure 3.
8. Mount the ProBEAM® Headlamp Adapter Bracket assembly to the OEM headlamp mounting bracket using the four supplied 1/4x20 Nylon Jam Nuts with the OEM Torx screws from Step 4. Refer to Figure 2.
9. Connect the H4 connector of the Headlamp Adapter Harness to the ProBEAM® Headlamp.
10. Connect the ProBEAM® headlamp with Headlamp Adapter Harness to the bikes OEM headlamp connector
11. Re-assemble ProBEAM® headlamp and headlamp mounting bracket to the fairing using the three Torx screws from Step 3. Make sure the wires and components of the harness are not pinched during installation, excessive heat or moving parts.
12. Reconnect vehicle battery negative terminal.
13. Check ProBEAM® headlamp operation and adjustment. Scan the QR code for instructions on the recommended adjustment procedure. The three Allen head fasteners shown in Figure 1 Arrow B on Page 1 are for adjusting the headlamp. The bottom Allen head fastener adjusts the headlamp beam up and down and the two Allen head fasteners on either side adjust the headlamp beam side to side.
14. Reassemble OEM bezel by turning clockwise until seated.
15. Test high and low beam functions of headlamp.



2



3



4

