



Thank you for purchasing our product. Before installing/operating the product, read the instructions carefully and retain them for future reference.

⚠ Attention!

- For installation, follow the steps described. Any damage caused by wrong installation shall be imputed to the users.
- Do not disassemble or change any parts. Opening and disassembling this unit will void any warranty.
- Maintenance and repairs should be executed by our professionals only.

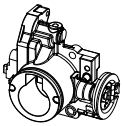
NOTE

⚠ Some procedures must be followed to avoid damages to the product.

⚠ **WARNING!** Certain procedure must be followed to avoid damages to yourself, to the vehicle or to others.

1-1 ACCESSORIES

1 THROTTLE BODY X1



2 THROTTLE BODY SEALING O-RING X1

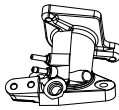


1-2 OPTIONAL ACCESSORIES

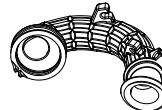
1 CYLINDER



2 INTAKE MANIFOLD



3 CONNECTING TUBE



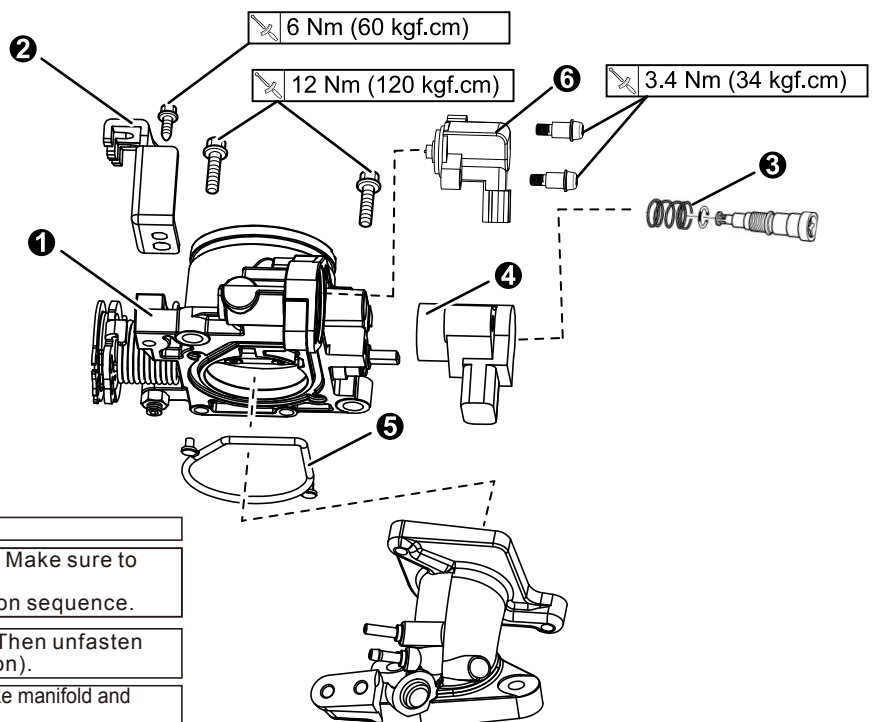
4 AIR FILTER COVER



5 AIR FILTER



2 INSTALLATION INSTRUCTIONS



Proceed as follows

- 1 Throttle body
- 2 STD Throttle wire roller cam
- 3 Original Idling screw
- 4 STD TPS sensor module
- 5 Throttle body sealing O-ring
- 6 Solenoid

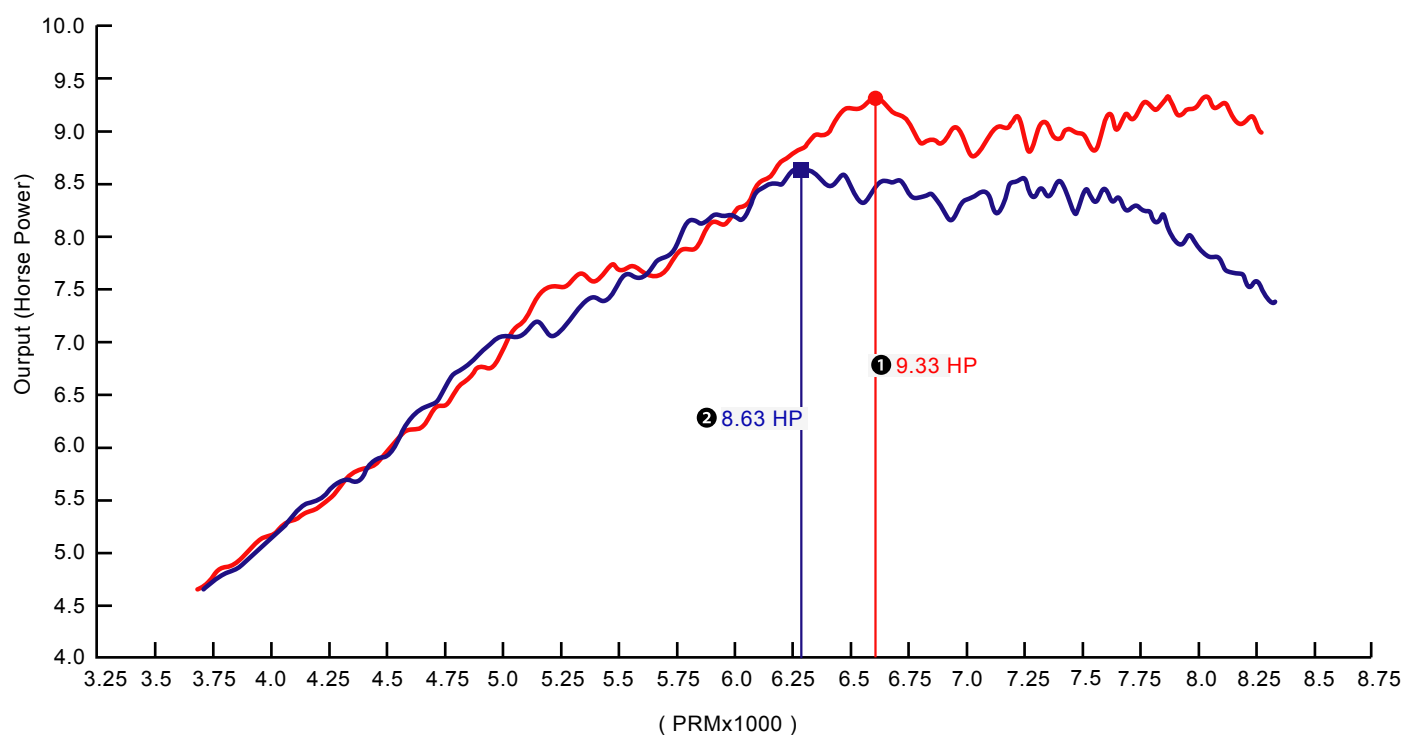
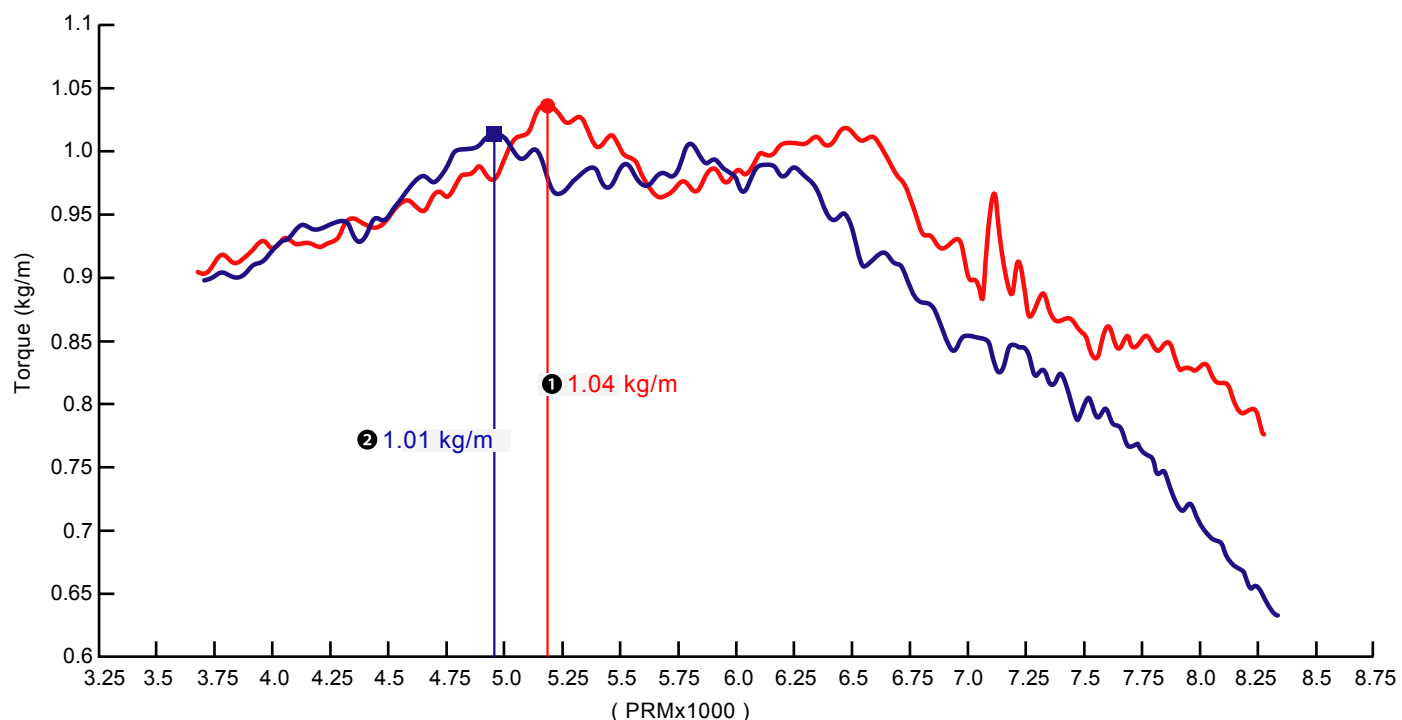
⚠ Use lubricating oil before installing.

NOTE Proceed according to the drawing in order. Make sure to disassemble the parts in reverse order. Refer to the above picture for the installation sequence.

NOTE Make sure to fully fasten the idling screw. Then unfasten screw with two threads (in standard position).

NOTE KOSO MSX Throttle body with KOSO MSX Intake manifold and KOSO MSX Connecting Tube.

3 DYNO TEST CHART



NOTE 1 KOSO Intake+KOSO Throttle body+KOSO Air cleaner box connection tube+KOSO Air filter cover

NOTE 2 STD

NOTE Test results vary with testing environment and weather. This test chart is for reference only.