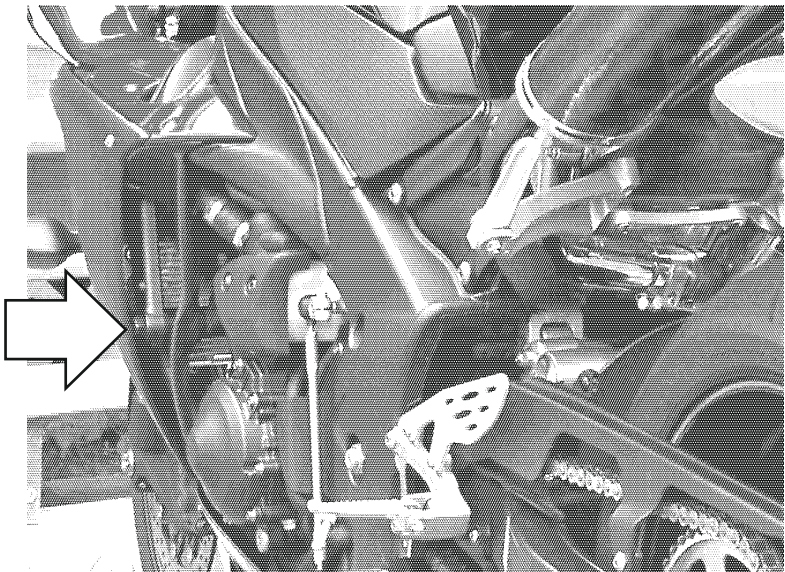


V3 FRAME SLIDERS KIT 2.0

YAMAHA YZF R1

year of production: '09-'14

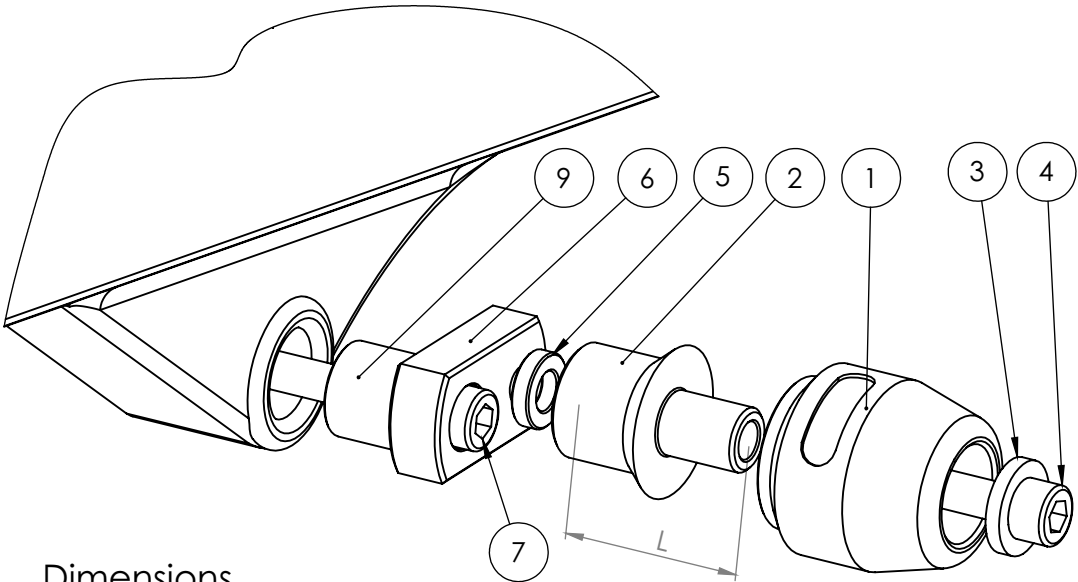
product code: SR179



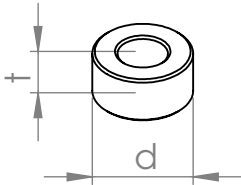
Assembly position
(both sides)

Assembly instructions

- 1. Remove the fairings on both sides.
 - 2. Please check the assembly positions on the image above. Remove the original bolts indicated with the arrow on the image above.
 - 3. Replace the original bolts with the new mounting bolts (parts #7), spacers (parts #9) and metal adapters (parts #6) and put these parts in the right order shown on the assembly scheme on the right page. Put the adapters (parts #6) in the right positions according to the assembly scheme. Please use the original spacer under the frame on the left side.
 - 4. Please assemble the fairings.
 - 7. Assemble the sliders, round cylindrical body, the bolts, steel sleeve and the spacers (parts #1, #2, #3 and #4) according to the drawing on the right page. Put them into the threaded holes in the adapter (part #6).
- We suggest to use the threadlocker (eg. Loctite®) to make sure that the vibrations of the engine do not loosen the bolts.



Dimensions
of the spacers



Assembly scheme (both sides)

Part #	Part name	Left side (as You sit on the motorbike)	Right side
1	Slider	1 pcs.	1 pcs.
2	Round cylindrical body	L = 50 mm	L = 60 mm
3	Steel sleeve	1 pcs.	1 pcs.
4	Allen bolt (8,8 class)	M10x70 mm	M10x80 mm
5	Spacer	-	-
6	Adapter	Aluminium (milled)	Aluminium (flat)
7	Mounting bolt 1	M12x1,25x120 (Hex)	M12x1,25x60 (Hex)
8	Mounting bolt 2	-	-
9	Spacer 1	t = 20 mm, d = 10 mm	-
10	Spacer 2	-	-
11	Nut	-	-
12	Washer	-	-

Legal note. This product is a professional accessory to be used on the race track. Neither manufacturer, nor Seller take responsibility for any damages occurred despite of using protective accessories. For more information go to vortexracing.com