

Custom Dynamics® Rear Fender Strut LED Turn Signals Installation Instructions

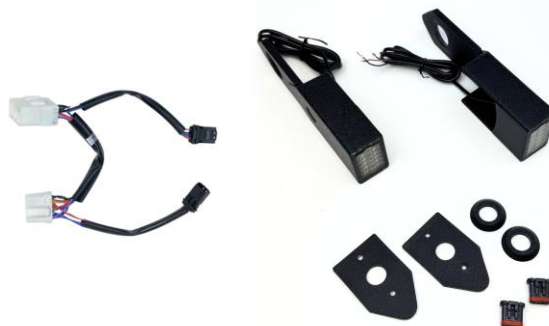


Part Numbers

CD-STRUT-HD-B, CD-STRUT-HD-C

Package Contents

Custom Dynamics® Rear Fender Strut LED Turn Signals (2)
MPR-HD-SEQ-PLUG (1)
Machined Washers (2)
Machined Spacer Plates (2)
5/16"-18 x 5/8" Socket Head Bolts (2)
5/16"-18 Serrated nuts (2)
JAE Male connectors (2)
6" Cable Ties (6)
Instructions (1)



Fitment

2000-2010 Harley-Davidson® Super Glide (FXD), 2001-2003 Super Glide T-Sport (FXDXT), 2001-2005 Super Glide Sport (FXDX), 2005-2014 Super Glide Custom (FXDC), 2000-2017 Wide Glide (FXDWG), 2000-2017 Low Rider (FXDL), 2016-2017 Low Rider S (FXDLS), 2010-2017 Street Bob (FXDB), 2008-2017 Fat Bob (FXDF), 2009-2010 CVO Fat Bob (FXDFSE), 2007-2008 CVO Super Glide (FXDSE) and 2000 Super Glide Convertible (FXDSCONV).

Suggested Tools

Safety Glasses
T40 TORX Socket
T45 TORX Socket
9/16" Socket or Open End Wrench
5/16" Allen Socket or T-Handle
Phillips Screwdriver

Installation

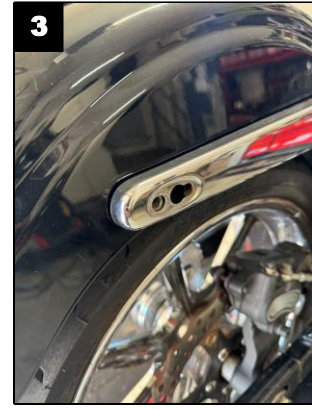
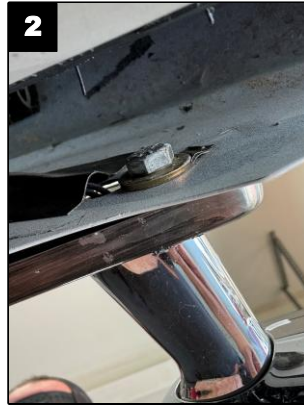
Warning

Rider and passenger safety depend upon the correct installation of this kit. Use the appropriate service manual procedures. If the procedure is not within your capabilities or you do not have the correct tools, have a qualified technician perform the installation. Improper installation of this kit could result in death or serious injury.

1. Remove all necessary parts to disconnect the negative battery cable from the battery.
2. Remove OEM turn signal and stand off by removing bolt on the inside of the fender. Shown in **Figures 1 & 2**.
3. Pull OEM turn signal and wiring off motorcycle and out of the fender strut. Shown in **Figure 3**.

Questions? Email: Info@CustomDynamics.com or Call us at: 1(919)554-0949 M-TH 8:30AM-5:30PM, F 9:30AM-5:30PM EST

Installation Instructions Continued - 2



Notice

Hand start all bolts, **DO NOT** use impact wrench/"zip gun" when installing.

4. Install the new Custom Dynamics® Rear Fender Strut LED Turn Signals to the rear fender strut using supplied 5/16"-18 x 5/8" Socket Head Bolt and Nuts. Route the wire through the hole in fender and along the side of the fender to under the seat. Shown in **Figures 4 & 5**.

Note

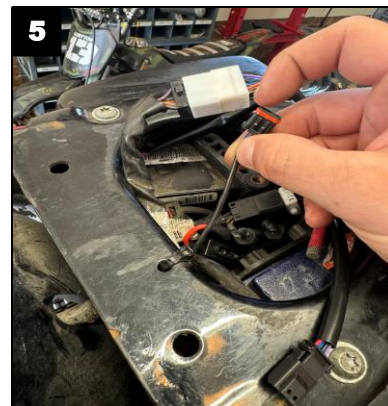
Depending on fender strut or year of motorcycle you may need to source a longer bolt than supplied (Thread Pitch 5/16"-18), also may need to source cable tie holders to secure wires with the supplied Cable Ties on the inside of the fender if fender does not have a wire guide to secure wires from being cut, frayed or pinched.

5. Once both left and right Rear Fender Strut LED Turn Signal wires are at the center of motorcycle under the seat, the supplied JAE Male Connectors can be pinned with wires.
6. Wire color for JAE Connector shown in **Figure 6**.
7. Locate rear lighting connector and plug in-line the supplied MPR-HD-SEQ-PLUG Harness connector and connect both Rear Fender Strut LED Turn Signal JAE connectors (left is violet and right is brown). Shown in **Figures 7 & 8**.

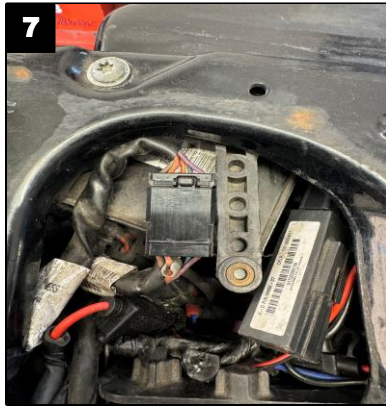
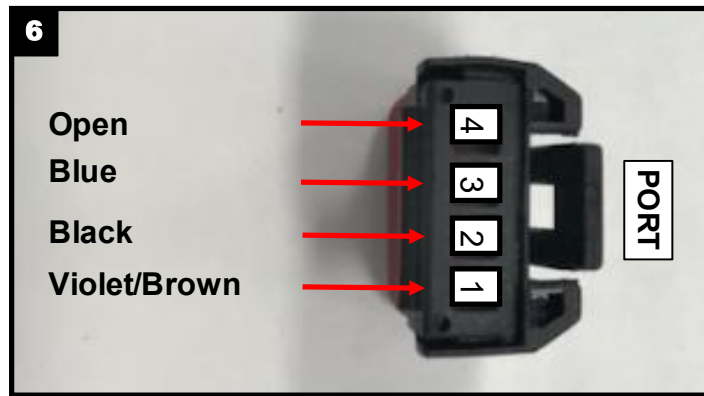
Note

Click the link to the right for specific instructions on how to pin a JAE connector.

[Click Here](#)



Installation Instructions Continued - 3



8. Secure the wiring under seat using the supplied Cable Ties from being cut, frayed or pinched.
9. Reconnect the negative battery cable to the battery and reinstall all necessary parts.
10. Test the new Custom Dynamics® Rear Fender Strut LED Turn Signals for proper operation.